



CREATIVECORPORATECLOTHING



# CORPORATE CLOTHING 2018

BUSINESS CASUAL - SOPHISTICATED - PERFORMANCE - ECLIPSE - CONCEPT - ONE - SHIRT & BLOUSE - MIX & MATCH

# CONTENTS

## COMPANY INFORMATION

Pages 04 - 05 - 146



**BUSINESS CASUAL**  
Collection

### Pages 06 - 27

Stunning new range for men and women to create the perfect business casual look

- Chino trousers and skirt
- Matching knitwear
- Beautiful tweed waistcoats

### NEW FOR 2018

- Beautiful 11 piece collection



**SOPHISTICATED**  
Collection

### Pages 28 - 43

Premium lightweight tailoring

- 54% Polyester, 44% Wool, 2% Lycra
- 270gm fabric, Nanotech stain-resistant finish
- Ideal for management, financial/banking sectors, hotels, front of house

### NEW FOR 2018

- TORINO slim fit trouser - page 37



**PERFORMANCE**  
Collection

### Pages 44 - 61

Superb mid-weight high performance tailoring

- 65% Polyester, 35% Wool with Shape Memory Technology
- 325gm crease-resistant fabric
- Ideal for hotels, hospitality, councils, FM & security

### NEW FOR 2018

- HEMPEL slim fit trouser - page 49



**ECLIPSE**  
Collection

### Pages 62 - 77

Mid-weight corporate suiting - slim and tailored fits

- 64% Polyester, 34% Viscose, 2% Elastane
- 330gm fabric, Teflon finish
- Ideal for retail, hotels, front of house

### NEW FOR 2018

- New colourway - solid navy
- LARISSA ladies' waistcoat - page 71
- PROTEUS men's waistcoat - page 65

# INVEST in tried and tested, high quality corporate clothing

Brook Taverner has been helping customers make the right impression since 1912. Over 100 years on, when the right corporate identity is as vital as ever, we are delighted to be Europe's largest, most successful supplier of stock supported corporate clothing. Our passion for fabrics and

tailoring is stronger than ever, as is our obsession with detail and performance. We blend our 100 year heritage with innovation and progress to consistently bring to the market exceptional corporate clothing.



**CONCEPT**  
Collection

## Pages 78 - 87

Durable heavier weight corporate suiting

- 65% Polyester, 35% Viscose
- 390gm fabric
- Ideal for FM, security, transport, hospitality, health sector



**ONE**  
Collection

## Pages 88 - 97

Mid-weight entry level collection

- 100% Superfine Polyester
- 335gm fabric
- Ideal for hospitality, schools, FM & health sector

### NEW FOR 2018

- NEPTUNE dress - page 91



**SHIRT & BLOUSE**  
Collection

## Pages 98 - 139

Contemporary business shirts and blouses

- Co-ordinating men's and women's business shirts and blouses
- Large choice of fabrics, fits & styles
- Ideal for all corporate arenas

### NEW FOR 2018

- New styles and colour in our beautiful Crepe De Chine fabrics - pages 110 - 115
- New colours and styles in our best-selling cotton rich fabrics - pages 123 - 127



**MIX & MATCH**  
Collection

## Pages 140 - 145

Classic menswear  
Timeless men's formalwear  
Women's coat

# NEW FOR 2018





## STOCK supported

More and more end users are turning to stock supported corporatewear ranges - it's easy to see why:

- Brook Taverner Ltd holds stock to the value of £7.5 million.
- No minimum order requirements - you only pay for what your business needs
- Tried and tested styles and fabrics – benefit from the optimum lifespan and value from your corporatewear
- Greater choice - mix and match collections with a market-leading range of sizes and fittings mean wearers can choose styles and colours which make them look and feel professional
- Save time - in stock means fast delivery and no minimum reorder quantities
- Save money - no fabric to underwrite and no garment stock to pay for up front or at the end of the contract
- Garments ultimately have a lower unit cost



## BROOK TAVERNER CSR

Brook Taverner works with some of the best fabric mills in the world and ensures that all clothing is made in ethically sound factories. We strive to ensure that all fabrics used meet Oeko-Tex Standard 100 environmental requirements.

We make certain our supply chain commits to the ETI Base Code. This worldwide recognised code promotes respect for workers' rights and aims to ensure they are free from discrimination and exploitation & enjoy conditions of freedom, security and equality. Our factories undergo Sedex and SMETA audits on an annual basis to confirm that the ETI Base Code is being adhered to.

Further information on our CSR policy can be found on our website

[www.brooktaverner.com](http://www.brooktaverner.com)

Further information can be found on

[www.ethicaltrade.org](http://www.ethicaltrade.org)

[www.sedexglobal.com](http://www.sedexglobal.com)



# BUSINESS CASUAL

## COLLECTION

11 piece collection

### WOMEN'S

#### CHINO TROUSER

HOUSTON Slim Leg 08 - 09 - 12 - 13

#### CHINO SKIRT

AUSTIN 08 - 13

#### KNITWEAR

SEATTLE Crew-neck Cardigan 14

AUGUSTA V-neck Cardigan 16

ATLANTA V-neck Jumper 15

#### NASHVILLE WAISTCOAT

CHARCOAL Herringbone 18

CHARCOAL Pink Check 19

GREY Brown Check 20

GREEN Blue Check 21

NAVY Herringbone 22

NAVY Check 23

### WOMEN'S COLLECTION SUMMARY

Waistcoat, Trouser, Skirt & Knitwear 24 - 25 - 26

### MEN'S

#### CHINO TROUSER

MIAMI Slim Fit 08 - 10 - 11

DENVER Classic Fit 10

#### KNITWEAR

BOSTON V-neck Jumper 15 - 16

DETROIT V-neck Slipover 15 - 17

#### MEMPHIS WAISTCOAT

CHARCOAL Herringbone 18

CHARCOAL Pink Check 19

GREY Brown Check 20

GREEN Blue Check 21

NAVY Herringbone 22

NAVY Check 22

### MEN'S COLLECTION SUMMARY

Waistcoat, Trousers & Knitwear 24 - 25 - 26

### AFTERCARE

Business Casual Collection Care Guidelines 27

- CHINOS: 97% Cotton, 3% Elastane
- KNITWEAR: 60% Cotton, 40% Acrylic
- TWEED WAISTCOATS: 40% Wool, 40% Polyester, 20% Mixed fibres with Teflon finish



Teflon™ is a registered Trademark of  
The Chemours Company FC, LLC  
used under License by Brook Taverner Ltd.

NEW FOR 2018  
A STUNNING  
RANGE FOR MEN  
& WOMEN





## BUSINESS CASUAL CHINOS

### AUSTIN Chino Skirt

Grey  
Belt loops, side pockets,  
twin hip jett pockets.  
Napoli Blouse - Black Houndstooth  
Seattle Cardigan - Black

### HOUSTON Slim Leg Chino Trouser

Black  
Slim leg, side pockets,  
twin hip jett pockets, stretch waistband.  
Lugano Blouse - Black Houndstooth

### MIAMI Slim Fit Chino Trouser

Grey  
Slim fit, flat front, side pockets,  
twin hip jett pockets with button,  
telephone pocket, stretch waistband.  
Monza Shirt - Black Houndstooth  
Detroit Jumper - Black



**HOUSTON**  
Slim Leg Chino Trouser

Beige

Slim leg, side pockets,  
twin hip jett pockets,  
stretch waistband.

Firenze Blouse - Navy

CHINO TROUSERS  
WITH COMFORT  
STRETCH WAISTBAND





## DENVER

### Classic Fit Chino Trouser

Beige

Classic fit, flat front, side pockets, twin hip jett pockets with button, telephone pocket, stretch waistband.

Cassino Jacket - Mid Blue

Monza Shirt - Blue Houndstooth



## MIAMI

### Slim Fit Chino Trouser

Grey

Slim fit, flat front, side pockets, twin hip jett pockets with button, telephone pocket, stretch waistband..

## CHINO TROUSERS WITH COMFORT STRETCH WAISTBAND



### Denver Classic Fit Chino Trouser

Black



Navy

Beige

Grey

Black

**MIAMI**

**Slim Fit Chino Trouser**

Navy

Slim fit, flat front, side pockets, twin hip jett pockets with button, telephone pocket, stretch waistband.

Chester Shirt - White



## HOUSTON

Slim Leg Chino Trouser

Navy

Slim leg, side pockets,  
twin hip jett pockets,  
stretch waistband.

Firenze Blouse - Fuchsia

CHINO TROUSERS  
WITH COMFORT  
STRETCH WAISTBAND



## AUSTIN Chino Skirt

Beige

Belt loops, side pockets,  
twin hip jett pockets.

Siena Blouse - White



Austin  
Chino Skirt  
Grey



Navy

Beige

Grey

Black

## HOUSTON Slim Leg Chino Trouser

Black

Slim leg, side pockets,  
twin hip jett pockets,  
stretch waistband.

Nashville Waistcoat -

Navy Herringbone

Parma Blouse - Blue



## BUSINESS CASUAL KNITWEAR

### SEATTLE

Crew-neck Cardigan

Fuchsia

Crew-neck, ribbed neck & placket, tubular cuff & hem, contrast inner neck strip.

Mira Stretch Top - White



**BROOK TAVERNER**  
corporate tailoring

Light Blue

Fuchsia

Royal Blue

Navy

Charcoal

Black

**DETROIT**  
V-neck Slipover

Black  
V-neck, sleeveless, ribbed neck, armhole and hem, contrast inner neck strip.

**BOSTON**  
V-neck Jumper

Light Blue  
V-neck, long sleeve, ribbed neck, cuff and hem, contrast inner neck strip.  
Alba Shirt - White

**ATLANTA**  
V-neck Jumper

Light Blue  
V-neck, ribbed neck, tubular cuff and hem, contrast inner neck strip.  
Palena Blouse - White



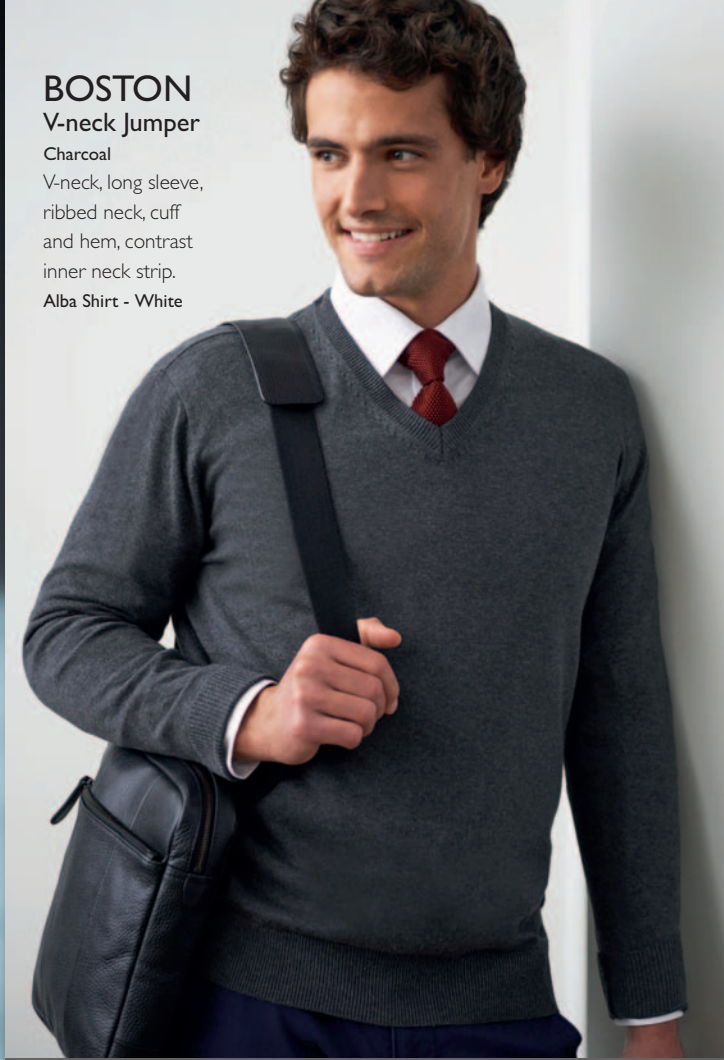


## BOSTON V-neck Jumper

Charcoal

V-neck, long sleeve,  
ribbed neck, cuff  
and hem, contrast  
inner neck strip.

Alba Shirt - White



## AUGUSTA V-neck Cardigan

Royal Blue

V-neck, ribbed placket, hem and cuff,  
contrast inner neck strip.

Capri Blouse - Cream



Royal Blue

Light Blue

Navy

Charcoal

Black





## DETROIT

### V-neck Slipover

Navy

V-neck, sleeveless, ribbed neck, armhole and hem, contrast inner neck strip.

Rapino Shirt - Blue

## BUSINESS CASUAL TWEED WAISTCOATS



### MEMPHIS Waistcoat

Charcoal Herringbone  
Notch lapel, 5 button front,  
2 welt pockets, cloth back  
with adjuster.  
Andora Shirt - Pink Herringbone



### NASHVILLE Waistcoat

Charcoal Herringbone  
Notch lapel, 5 button front,  
2 welt pockets, cloth back  
with vent detail and adjuster.  
Prosecco Blouse - Pink Herringbone



Navy Herringbone

Navy Check

Grey Brown Check

BROOK TAVERNER  
corporate tailoring

## MEMPHIS

### Waistcoat

Charcoal Pink Check

Notch lapel, 5 button front,  
2 welt pockets, cloth back  
with adjuster.

Monza Shirt - Lilac Houndstooth

## NASHVILLE

### Waistcoat

Charcoal Pink Check

Notch lapel, 5 button front,  
2 welt pockets, cloth back  
with vent detail and adjuster.

Prosecco Blouse - Pink Herringbone

Green Blue Check



## MEMPHIS

### Waistcoat

Grey Brown Check

Notch lapel, 5 button front,  
2 welt pockets, cloth back  
with adjuster.

Monza Shirt - Blue Houndstooth



## NASHVILLE

### Waistcoat

Grey Brown Check

Notch lapel, 5 button front,  
2 welt pockets, cloth back  
with vent detail and adjuster.

Parma Blouse - Navy



## NASHVILLE

### Waistcoat

Green Blue Check

Notch lapel, 5 button front,  
2 welt pockets, cloth back  
with vent detail and adjuster.

Capri Blouse - Cream



Green Blue Check

## MEMPHIS

### Waistcoat

Green Blue Check

Notch lapel, 5 button front,  
2 welt pockets, cloth back  
with adjuster.

Rapino Shirt - Blue



Grey Brown Check



## MEMPHIS

### Waistcoat

Navy Herringbone  
Notch lapel, 5 button front,  
2 welt pockets, cloth back  
with adjuster:  
Andora Shirt - Blue Herringbone



## NASHVILLE

### Waistcoat

Navy Herringbone  
Notch lapel, 5 button front,  
2 welt pockets, cloth back  
with vent detail and adjuster:  
Villeta Blouse - Blue Herringbone

Navy Herringbone



Navy Check

## MEMPHIS

### Waistcoat

Navy Check  
Notch lapel,  
5 button front,  
2 welt pockets,  
cloth back  
with adjuster:  
Cheadle Shirt -  
White



# NASHVILLE

Waistcoat

Navy Check

Notch lapel, 5 button front,  
2 welt pockets, cloth back  
with vent detail and adjuster.

Parma Blouse - Blue



# BUSINESS CASUAL

## TWEED WAISTCOATS - SUMMARY

Women's and Men's styles available in 6 colourways.

### WOMEN'S NASHVILLE

#### Waistcoat

Notch lapel,  
5 button front,  
2 welt pockets,  
cloth back  
with vent detail  
and adjuster.

#### Sizes:

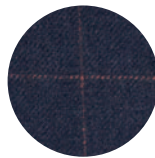
XS 4-6  
S 8-10  
M 12-14  
L 16-18  
XL 20-22  
2XL 24-46

#### Codes & Colours:

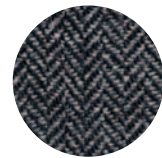
2310A Navy Herringbone  
2310B Navy Check  
2310C Charcoal Herringbone  
2310D Charcoal Pink Check  
2310E Grey Brown Check  
2310F Green Blue Check



A. Navy Herringbone



B. Navy Check



C. Charcoal Herringbone

### MEN'S MEMPHIS

#### Waistcoat

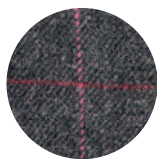
Notch lapel,  
5 button front,  
2 welt pockets,  
cloth back  
with adjuster.

#### Sizes:

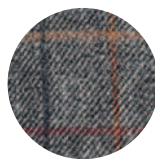
S 34-36  
M 38-40  
L 42-44  
XL 46-48  
2XL 50-52

#### Codes & Colours:

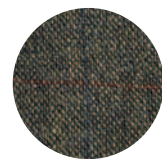
1463A Navy Herringbone  
1463B Navy Check  
1463C Charcoal Herringbone  
1463D Charcoal Pink Check  
1463E Grey Brown Check  
1463F Green Blue Check



D. Charcoal Pink Check



E. Grey Brown Check



F. Green Blue Check



Teflon™ is a registered Trademark of  
The Chemours Company FC, LLC  
used under License by Brook Taverner Ltd.

- TWEED WAISTCOATS: 40% Wool, 40% Polyester,  
20% Mixed fibres with Teflon finish, 460gm



# BUSINESS CASUAL

## KNITWEAR - SUMMARY

Women's and Men's styles available in up to 6 colours.



### WOMEN'S SEATTLE

**Crew-neck Cardigan**  
Crew neck, ribbed neck & placket, tubular cuff & hem, contrast inner neck strip.

**Sizes:**  
XS - 3XL

**Codes & Colours:**  
2308A Navy  
2308B Light Blue  
2308C Charcoal  
2308D Black  
2308E Royal Blue  
2308F Fuchsia



### WOMEN'S AUGUSTA

**V-neck Cardigan**  
V-neck, ribbed placket, hem and cuff, contrast inner neck strip.

**Sizes:**  
XS - 3XL

**Codes & Colours:**  
2309A Navy  
2309B Light Blue  
2309C Charcoal  
2309D Black  
2309E Royal Blue  
2309F Fuchsia



### WOMEN'S ATLANTA

**V-neck Jumper**  
V-neck, ribbed neck, tubular cuff and hem, contrast inner neck strip.

**Sizes:**  
XS - 3XL

**Codes & Colours:**  
2307A Navy  
2307B Light Blue  
2307C Charcoal  
2307D Black  
2307E Royal Blue  
2307F Fuchsia



### MEN'S BOSTON

**V-neck Jumper**  
V-neck, long sleeve, ribbed neck, cuff and hem, contrast inner neck strip.

**Sizes:**  
S - 3XL

**Codes & Colours:**  
7818A Navy  
7818B Light Blue  
7818C Charcoal  
7818D Black  
7818E Royal Blue



### MEN'S DETROIT

**V-neck Slipover**  
V-neck, sleeveless, ribbed neck, armhole and hem, contrast inner neck strip.

**Sizes:**  
S - 3XL

**Codes & Colours:**  
7819A Navy  
7819B Light Blue  
7819C Charcoal  
7819D Black  
7819E Royal Blue



#### Women's sizes:

XS 4/6  
S 8  
M 10/12  
L 14  
XL 16/18  
2XL 20  
3XL 22/24

#### Men's sizes:

S 36  
M 38/40  
L 42  
XL 44/46  
2XL 48  
3XL 50/52

• **KNITWEAR:** 60% Cotton, 40% Acrylic  
12 gauge knit

# BUSINESS CASUAL

## CHINOS - SUMMARY

Women's and Men's styles available in 4 colourways.

BROOK TAVERNER  
corporate tailoring

### WOMEN'S HOUSTON

#### Slim Leg Chino

Beige

Slim leg,  
side pockets,  
twin hip  
jett pockets,  
stretch waistband.

#### Sizes:

6 - 24 waist in leg lengths  
S-27", R-29", L-31", XL-33"  
& 36" unfinished

#### Codes & Colours:

2303A	Navy
2303B	Beige
2303C	Grey
2303D	Black



18cm

Half hem width at  
size 12 = 18cm



### WOMEN'S AUSTIN

#### Chino Skirt

Grey

Belt loops,  
side pockets,  
twin hip jett pockets.

#### Sizes:

6- 24 regular - 22"  
8- 18 long - 25"

#### Codes & Colours:

2302A	Navy
2302B	Beige
2302C	Grey
2302D	Black



### MEN'S MIAMI

#### Slim Fit Chino

Navy

Slim fit, flat front,  
side pockets,  
twin hip jett pockets  
with button, telephone  
pocket, stretch waistband.

#### Sizes:

28" - 42" waist in leg lengths  
S-29.5", R-31.5", L-33"  
& 36" unfinished

#### Codes & Colours:

8807A	Navy
8807B	Beige
8807C	Grey
8807D	Black

Half hem width at  
waist size 34" = 19cm



### MEN'S DENVER

#### Classic Fit Chino

Black

Classic fit, flat front,  
side pockets, twin  
hip jett pockets  
with button, telephone  
pocket, stretch waistband.

#### Sizes:

32" - 46" waist in leg lengths  
S-29.5", R-31.5", L-33"  
& 36" unfinished

#### Codes & Colours:

8806A	Navy
8806B	Beige
8806C	Grey
8806D	Black

Half hem width at  
waist size 34" = 21.5cm



• CHINOS: 97% Cotton, 3% Elastane, 350gm

CHINO TROUSERS WITH  
COMFORT STRETCH WAISTBAND



## AFTERCARE INSTRUCTIONS

- **CHINOS:** 97% Cotton, 3% Elastane  
Fully machine washable at 40°
- **KNITWEAR:** 60% Cotton, 40% Acrylic  
Fully machine washable at 40°
- **TWEED WAISTCOATS:** 40% Wool, 40% Polyester,  
20% Mixed fibres with Teflon finish  
**DRY CLEAN ONLY**



Teflon™ is a registered Trademark of The Chemours Company FC, LLC used under License by Brook Taverner Ltd.

# SOPHISTICATED

## COLLECTION

20 piece collection in a choice of up to 7 colours

### WOMEN'S

#### SLIM FIT

CALVI Jacket	32
<b>TORINO Trousers - NEW for 2018!</b>	<b>37</b>

#### TAILORED FIT

NOVARA Jacket	33
SUSA Jacket	33
GENOA Trousers	36
MIRANDA Trousers	36
SCAPOLI Waistcoat	36

#### CLASSIC FIT

OPERA Jacket	34
VARESE Trousers	36

#### DRESSES & SKIRTS

TERAMO Dress	35
MARINO Dress	35
BRONTE Skirt	34
NUMANA Skirt	34

### WOMEN'S COLLECTION SUMMARY

Women's Jackets & Trousers	40 - 41
Women's Dresses, Skirts & Waistcoat	42

### MEN'S

#### SLIM FIT

CASSINO Jacket	29
CASSINO Trousers	30

#### TAILORED FIT

AVALINO Jacket	30
AVALINO Trousers	30
BUSSO Waistcoat	31

#### CLASSIC FIT

IMOLA Jacket	31
IMOLA Trousers	31

### MEN'S COLLECTION SUMMARY

Men's Jackets, Waistcoat & Trousers	38 - 39
-------------------------------------	---------

### COLOUR CHOICE AND AFTERCARE

Sophisticated Collection Fabric Colour Choice	43
---	----

- 54% Polyester, 44% Wool, 2% Lycra
- 270gm fabric, Nanotech stain-resistant finish
- Machine washable tailoring
- Martindale Test > 60,000 rubs
- Ideal for management, financial/banking sectors, hotels, front of house

**NEW FOR 2018**  
**TORINO Slim Fit Trousers**  
- page 37



## CASSINO

### Slim Fit Jacket

Navy

2 button jacket,  
side vents, slim lapels.

Andora Shirt - Pink Herringbone

## SLIM FIT SUITING





**AVALINO**  
Tailored Fit Jacket  
Light Grey  
2 button jacket, side vents.  
Pisa Shirt - Sky Blue

**TAILORED FIT SUITING**

**CASSINO**  
Slim Fit Trouser

Navy  
Flat front trouser:  
Andora Shirt -  
Pink Herringbone

**AVALINO**  
Tailored Fit Trouser

Mid Blue  
Flat front trouser:  
Monza Shirt -  
Lilac Houndstooth



## CLASSIC FIT SUITING



### IMOLA

#### Classic Fit Jacket

Charcoal  
3 button jacket, centre vent.  
Andora Shirt - White Herringbone

### BUSSO

#### Waistcoat

Charcoal  
Cloth backed, 2 welt pockets,  
5 button front.  
Alba Shirt - White

### IMOLA

#### Classic Fit Trouser

Charcoal  
Single pleat.  
Alba Shirt - White



**CALVI**  
Slim Fit Jacket

Mid Blue  
2 button, cutaway front  
plain back.

Roma Blouse - Fuchsia

SLIM FIT JACKET







**NOVARA**  
Tailored Fit Jacket

Light Grey  
2 button, contrast  
lapel detailing,  
centre vent.  
Prosecco Blouse -  
Pink Herringbone

TAILORED FIT JACKETS



**SUSA**  
Tailored Fit Jacket

Navy  
3 button, rounded  
lapel and pockets,  
plain back.  
Prosecco Blouse -  
Lilac Herringbone

**FASHION BELTS**

**Twin Packs**

Women's fashion  
belts, gold buckle.

**Sizes:**

XS	6
S	8 - 10
M	12 - 14
L	16 - 18
XL	20 - 22 - 24

**Codes & Colours:**

2248A	Navy/Nude
2248D	Black/Nude



2248A Navy/Nude



2248D Black/Nude

# CLASSIC FIT JACKET



## OPERA Classic Fit Jacket

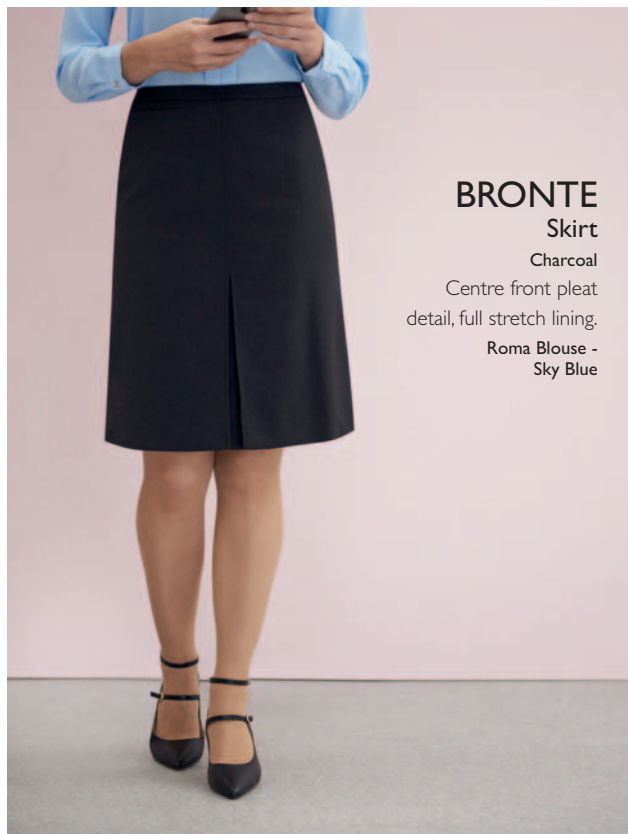
Black  
2 button, 2 slanted flap  
pockets, 1 inside pocket,  
centre vent.  
Verona Blouse - Royal Blue

## NUMANA Skirt

Black  
Centre vent,  
shaped back panels,  
full stretch lining.

## NUMANA Skirt

Mid Blue  
Centre vent,  
shaped back panels,  
full stretch lining.  
Verona Blouse - Royal Blue/Navy Print



## BRONTE Skirt

Charcoal  
Centre front pleat  
detail, full stretch lining.  
Roma Blouse -  
Sky Blue

## MARINO

### Dress

Navy

Capped sleeve,  
centre back vent,  
full stretch lining,  
waistline darts.



## TERAMO

### Dress

Mid Blue

Princess seam,  
short sleeve,  
centre vent,  
full stretch lining.



### SCAPOLI Tailored Fit Waistcoat

Black  
4 button front,  
cloth backed,  
2 welt pockets.  
Napoli Blouse -  
Lilac Houndstooth



### GENOA Tailored Leg Trousers

Black  
2 side pockets,  
mock rear pockets.  
Napoli Blouse -  
Lilac Houndstooth



### GENOA Tailored Leg Trousers

Black  
2 side pockets,  
mock rear pockets.  
Mira Top - White



### VARESE Straight Leg Trousers

Charcoal  
Single button,  
front fastening.  
Verona Blouse - Fuchsia



### MIRANDA Parallel Leg Trousers

Light Grey  
Double button,  
front fastening.  
Mira Top - White



NEW  
FOR 2018!

**TORINO**

Slim Leg  
Trousers

Mid Blue

2 side pockets,  
mock rear pockets.

Roma Blouse - Fuchsia



SLIM FIT TROUSER

# MEN'S

## SOPHISTICATED SUMMARY

### CASSINO

Slim Fit Jacket  
Mid Blue

2 button jacket,  
side vents,  
slim lapels.

**Sizes:**

34" - 44" short  
34" - 46" regular  
34" - 44" long

**Codes & Colours:**

5985A Navy  
5985C Charcoal  
5985D Black  
5985G Light Grey  
5985H Mid Blue



Centre back length at  
size 40R = 75cm

### AVALINO

Tailored Fit Jacket  
Light Grey

2 button,  
side vents.

**Sizes:**

36" - 48" short  
34" - 56" regular  
34" - 48" long

**Codes & Colours:**

5647A Navy  
5647B Navy  
Pinstripe  
5647C Charcoal  
5647D Black  
5647F Charcoal  
Pinstripe  
5647G Light Grey  
5647H Mid Blue

Sizes 34R to 56R available in  
solid colours only.  
Other colours available  
in sizes 36R to 52R.  
Sizes 34L and 36L available in  
colour A only.



Centre back length at  
size 40R = 77cm

### CASSINO

Slim Fit Trousers  
Mid Blue

Flat front,  
2 side pockets,  
1 rear pocket.

**Sizes:**

28" - 40" waist in leg lengths  
S-29.5", R-31.5", L-33"  
& 36" unfinished

**Codes & Colours:**

8655A Navy  
8655C Charcoal  
8655D Black  
8655G Light Grey  
8655H Mid Blue

Half hem width at  
waist size 34" = 19cm



### AVALINO

Tailored Fit Trousers  
Light Grey

Flat front,  
2 side pockets,  
1 rear pocket.

**Sizes:**

24" - 46" waist in leg lengths  
S-29.5", R-31.5", L-33"  
& 36" unfinished

**Codes & Colours:**

8387A Navy  
8387B Navy  
Pinstripe  
8387C Charcoal  
8387D Black  
8387F Charcoal  
Pinstripe  
8387G Light Grey  
8387H Mid Blue

Half hem width at  
waist size 34" = 21cm

Waist size 46 available  
in solid colours only.  
Sizes 24 and 26 available  
in colour A only.



- 54% Polyester, 44% Wool, 2% Lycra
- 270gm fabric, Nanotech stain-resistant finish
- Machine washable tailoring
- Martindale Test > 60,000 rubs

# MEN'S SOPHISTICATED SUMMARY

BROOK TAVERNER  
corporate tailoring

## IMOLA Classic Fit Jacket

Navy Pinstripe  
3 button,  
centre vent.

**Sizes:**  
36" - 48" short  
36" - 56"\* regular  
38" - 48" long

**Codes & Colours:**  
5646A Navy  
5646B Navy  
Pinstripe  
5646C Charcoal  
5646D Black  
5646F Charcoal  
Pinstripe

\*Size 56R available in  
solid Navy only.



Centre back length at  
size 40R = 78cm

## BUSSO Waistcoat

Charcoal Pinstripe  
Cloth backed,  
2 welt pockets,  
5 button front.

**Sizes:**  
34" - 56" regular

**Codes & Colours:**  
1074A Navy  
1074B Navy  
Pinstripe  
1074C Charcoal  
1074D Black  
1074F Charcoal  
Pinstripe  
1074G Light Grey  
1074H Mid Blue

Colour A, C and D  
available up to size 56R.  
Size 34 available in solid  
colours only.



## IMOLA Classic Fit Trousers

Black  
Single pleat,  
2 side pockets,  
1 rear pocket.

**Sizes:**  
28" - 52" waist in leg lengths  
S-29.5", R-31.5", L-33"  
& 36" unfinished

**Codes & Colours:**  
8314A Navy  
8314B Navy  
Pinstripe  
8314C Charcoal  
8314D Black  
8314F Charcoal  
Pinstripe

Half hem width at  
waist size 34" = 22cm

Waist sizes 50-52 available  
in solid colours only



# WOMEN'S SOPHISTICATED SUMMARY

## CALVI Slim Fit Jacket

Light Grey  
2 button,  
cutaway front  
plain back.

**Sizes:**  
6 - 16 petite  
4 - 18 regular  
6 - 16 long

**Codes & Colours:**  
2252A Navy  
2252C Charcoal  
2252D Black  
2252G Light Grey  
2252H Mid Blue



Centre back length at  
size 12R = 55.5cm

## SUSA Tailored Fit Jacket

Charcoal  
3 button,  
rounded lapel  
plain back

**Sizes:**  
6 - 16 petite  
6 - 24 regular  
6 - 18 long

**Codes & Colours:**  
2179A Navy  
2179B Navy  
Pinstripe  
2179C Charcoal  
2179D Black  
2179F Charcoal  
Pinstripe  
2179G Light Grey



Centre back length at  
size 12R = 60.5cm

## NOVARA Tailored Fit Jacket

Mid Blue  
2 button,  
contrast detailing  
centre vent.

**Sizes:**  
6 - 18 petite  
4 - 24 regular  
8 - 18 long

**Codes & Colours:**  
2222A Navy  
2222B Navy  
Pinstripe  
2222C Charcoal  
2222D Black  
2222F Charcoal  
Pinstripe  
2222G Light Grey  
2222H Mid Blue

Size 4 regular available  
in solid colours only.

Size 18 petite available  
in solid colours only.



Centre back length at  
size 12R = 63cm

## OPERA Classic Fit Jacket

Navy  
2 button,  
2 flap pockets  
centre vent.

**Sizes:**  
6 - 16 petite  
6 - 24 regular  
10 - 24 long

**Codes & Colours:**  
2250A Navy  
2250C Charcoal  
2250D Black  
2250G Light Grey



Centre back length at  
size 12R = 65.5cm

- 54% Polyester, 44% Wool, 2% Lycra
- 270gm fabric, Nanotech stain-resistant finish
- Machine washable tailoring
- Martindale Test > 60,000 rubs



**NEW  
 FOR 2018!**

**TORINO**

Slim Leg Trousers  
 Black

Side pockets  
 mock hip pockets.

**Sizes:**

4 - 24 waist in leg lengths  
 S-27", R-29", L-31", XL-33"  
 & 36" unfinished

**Codes & Colours:**

2294A Navy  
 2294C Charcoal  
 2294D Black  
 2294G Light Grey  
 2294H Mid Blue



16cm

Half hem width at  
 size 12 = 16cm

**GENOA**

Tailored Leg Trousers  
 Mid Blue

2 side pockets  
 mock rear pockets  
 half lined.

**Sizes:**

4 - 24 waist in leg lengths  
 S-27", R-29", L-31", XL-33"  
 & 36" unfinished

**Codes & Colours:**

2234A Navy  
 2234B Navy  
 Pinstripe  
 2234C Charcoal  
 2234D Black  
 2234F Charcoal  
 Pinstripe  
 2234G Light Grey  
 2234H Mid Blue

Size 4 available in  
 solid colours only



21cm

Half hem width at  
 size 12 = 21cm

**VARESE**

Straight Leg Trousers  
 Navy

Single button  
 front fastening  
 key card pocket.

**Sizes:**

2 - 24 waist in leg lengths  
 S-27", R-29", L-31", XL-33"  
 & 36" unfinished

**Codes & Colours:**

2109A Navy  
 2109B Navy  
 Pinstripe  
 2109C Charcoal  
 2109D Black  
 2109F Charcoal  
 Pinstripe

Sizes 2 and 4 available  
 in colour A only



22cm

Half hem width at  
 size 12 = 22cm

**MIRANDA**

Parallel Leg Trousers  
 Light Grey

low waist,  
 key card pocket,  
 mock rear pockets.

**Sizes:**

6 - 24 waist in leg lengths  
 S-27", R-29", L-31", XL-33"  
 & 36" unfinished

**Codes & Colours:**

2181A Navy  
 2181B Navy  
 Pinstripe  
 2181C Charcoal  
 2181D Black  
 2181F Charcoal  
 Pinstripe  
 2181G Light Grey



23cm

Half hem width at  
 size 12 = 23cm

# WOMEN'S SOPHISTICATED SUMMARY

## TERAMO

Dress  
Charcoal

Princess seam,  
short sleeve,  
centre vent,  
full stretch lining.

Sizes:  
6 - 24 regular  
8 - 20 long

### Codes & Colours:

2289A	Navy
2289C	Charcoal
2289D	Black
2289G	Light Grey
2289H	Mid Blue



Centre back length at  
size 12R = 97cm

## MARINO

Dress  
Charcoal

Capped sleeve,  
centre back vent,  
full stretch lining,  
waistline darts.

Sizes:  
6 - 24 regular  
8 - 20 long

### Codes & Colours:

2286A	Navy
2286C	Charcoal
2286D	Black
2286G	Light Grey
2286H	Mid Blue



Centre back length at  
size 12R = 97cm

## BRONTE

Skirt  
Charcoal

Centre front pleat detail,  
fob pocket with saddle  
stitching, full stretch lining.

Sizes:  
6 - 24 regular - 22"

### Codes & Colours:

2253A	Navy
2253C	Charcoal
2253D	Black
2253G	Light Grey



## NUMANA

Skirt  
Mid Blue

Centre vent,  
shaped back panels,  
full stretch lining.

Sizes:  
2 - 24 regular - 22"  
8 - 24 long - 25"  
8 - 24 x-long - 27"

### Codes & Colours:

2224A	Navy
2224B	Navy Pinstripe
2224C	Charcoal
2224D	Black
2224F	Charcoal Pinstripe
2224G	Light Grey
2224H	Mid Blue

Size 2R available in  
colour A only.

Size 4R available in  
solid colours only.



## SCAPOLI

Waistcoat  
Navy

4 button front,  
cloth backed,  
2 welt pockets.

Sizes:  
6 - 24 long

### Codes & Colours:

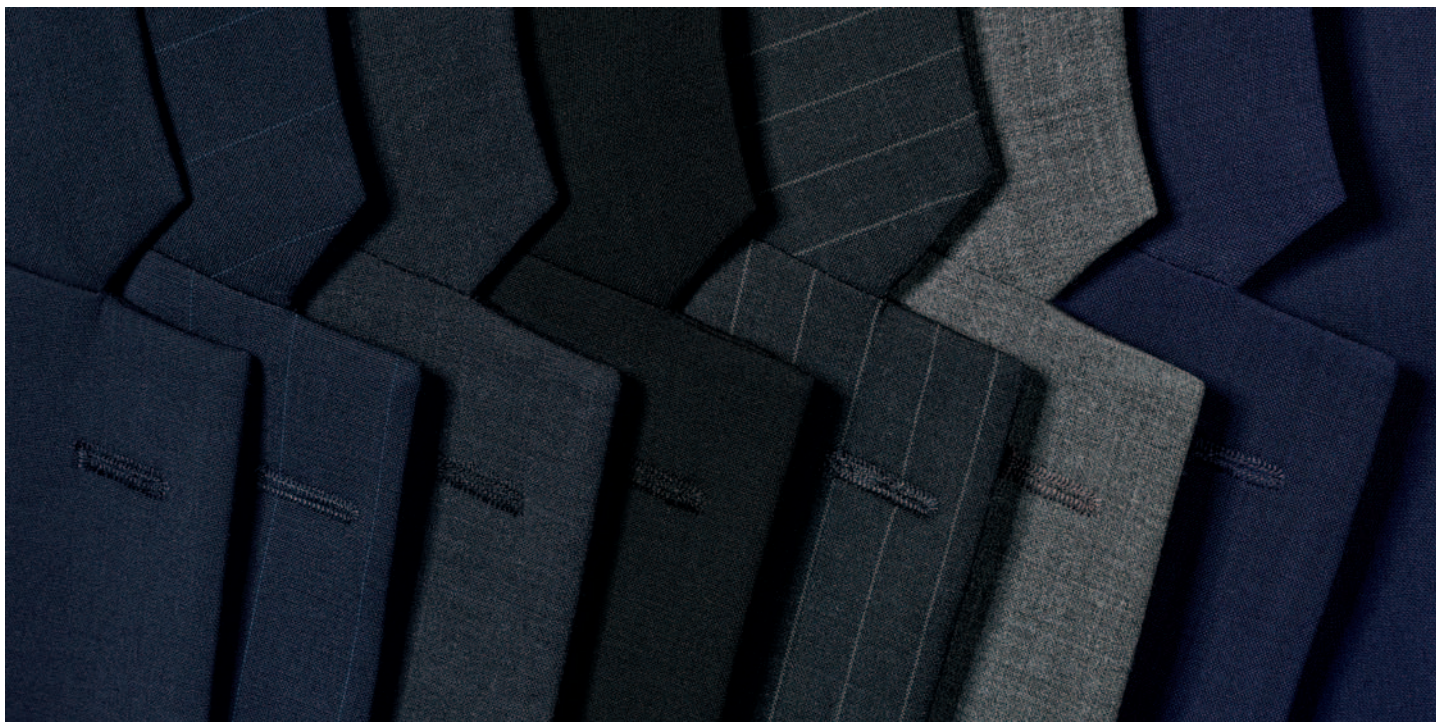
2200A	Navy
2200B	Navy Pinstripe
2200C	Charcoal
2200D	Black
2200F	Charcoal Pinstripe
2200G	Light Grey
2200H	Mid Blue



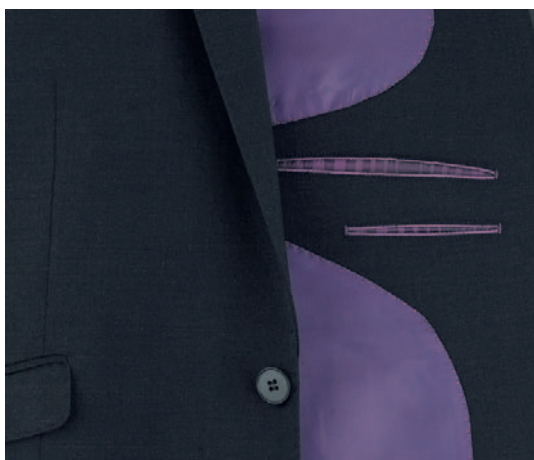
- 54% Polyester, 44% Wool, 2% Lycra
- 270gm fabric, Nanotech stain-resistant finish
- Machine washable tailoring
- Martindale Test > 60,000 rubs

# COLOUR CHOICE

Our **SOPHISTICATED** collection is available in up to 7 fabric colour choices.



A. Navy      B. Navy Pinstripe      C. Charcoal      D. Black      F. Charcoal Pinstripe      G. Light Grey      H. Mid Blue



## WASHCARE INSTRUCTIONS

### WASHING

For the best results ensure that the suit is washed separately & machine wash as wool. Garments will need to be removed immediately from the machine when the cycle has ended.

### DRYING

Place the jacket on the hanger; gently shake and re-shape by straightening seams. Fold the trousers to the front creases and hang over the bar on garment hanger. Allow both garments to dry naturally & keep away from direct heat. Do not tumble dry.

### FINISHING

If required, press the garments using a cool iron over a damp cloth. Alternatively, garments from the Sophisticated Collection can be dry cleaned.



MACHINE WASHABLE 40°  
SUITABLE FOR DRY CLEANING (P)



- 54% Polyester, 44% Wool, 2% Lycra
- 270gm fabric, Nanotech stain-resistant finish
- Machine washable tailoring
- Martindale Test > 60,000 rubs

# PERFORMANCE

## COLLECTION

18 piece collection in a choice of up to 4 colours

### WOMEN'S

#### SLIM FIT

ROSEWOOD Jacket	45
HEMPEL Trousers - NEW for 2018!	49

#### TAILORED FIT

RITZ Jacket	46
MAYFAIR Jacket	46
ASTORIA Trousers	48
DORCHESTER Trousers	48
WALDORF Waistcoat	46

#### CLASSIC FIT

CONNAUGHT Jacket	47
GROSVENOR Trousers	46 - 48

#### DRESS & SKIRT

CORINTHIA Dress	50
WYNDHAM Skirt	45 - 50 - 51

### WOMEN'S COLLECTION SUMMARY

Women's Jackets & Trousers	58 - 59
Women's Dress, Skirts & Waistcoat	60

### MEN'S

#### SLIM FIT

HOLBECK Jacket	51 - 53
HOLBECK Trousers	51 - 54

#### TAILORED FIT

ALDWYCH Jacket	52
ALDWYCH Trousers	54
CAPITAL Waistcoat	55

#### CLASSIC FIT

LANGHAM Jacket	53
LANGHAM Trousers	54

### MEN'S COLLECTION SUMMARY

Men's Jackets, Waistcoat & Trousers	56 - 57
-------------------------------------	---------

### COLOUR CHOICE AND AFTERCARE

Performance Collection Fabric Colour Choice	61
---	----

- 65% Polyester, 35% Wool with Shape Memory Technology
- 325gm crease-resistant fabric
- Machine washable tailoring
- Martindale Test > 80,000 rubs
- Ideal for hotels, hospitality, councils, FM & security

**NEW FOR 2018**  
HEMPEL Slim Fit Trousers  
- page 49



## SLIM FIT SUITING



### ROSEWOOD

#### Slim Fit Jacket

Charcoal

1 button,

peaked lapel,

plain back.

Roma Blouse - Burgundy/Navy Print

### WYNDHAM

#### Skirt

Charcoal

Centre vent,

shaped back panels,

full stretch lining.

## RITZ

### Tailored Fit Jacket

Mid Grey  
3 button,  
peaked lapels,  
centre vent.  
Trevi Blouse - Blue

## GROSVENOR

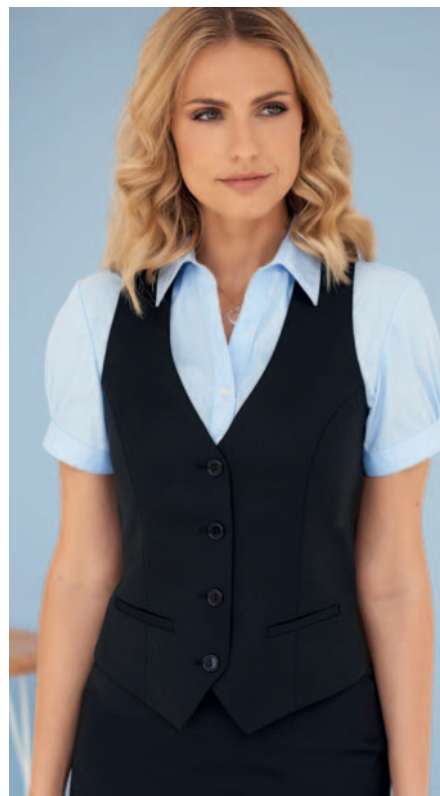
### Straight Leg Trouser

Mid Grey  
Single button.

## MAYFAIR

### Tailored Fit Jacket

Black  
3 button,  
rounded lapel and pockets,  
plain back.  
Trevi Blouse - Blue



## WALDORF

### Ladies' Waistcoat

Black  
4 button front,  
Lining backed  
with adjuster,  
2 welt pockets.  
Paduli Blouse - Blue

TAILORED FIT JACKETS

# CLASSIC FIT SUITING

## CONNAUGHT

Classic Fit Jacket

Navy

2 button,  
centre vent.

Lugano Blouse - Blue Houndstooth





**DORCHESTER**  
Parallel Leg Trousers  
Mid Grey  
Front double  
button fastening.  
Riola Blouse - White



**ASTORIA**  
Tailored Leg Trousers  
Mid Grey  
2 side pockets.  
Firenze Blouse - White



**GROSVENOR**  
Straight Leg Trousers  
Navy  
Single button.  
Felina Blouse - White



NEW  
FOR 2018!

**HEMPEL**

Slim Leg Trousers

Black

Front double  
button fastening.

Verona Blouse - Burgundy

SLIM FIT TROUSER

## CORINTHIA

Dress

Black

V-neck, short sleeve.



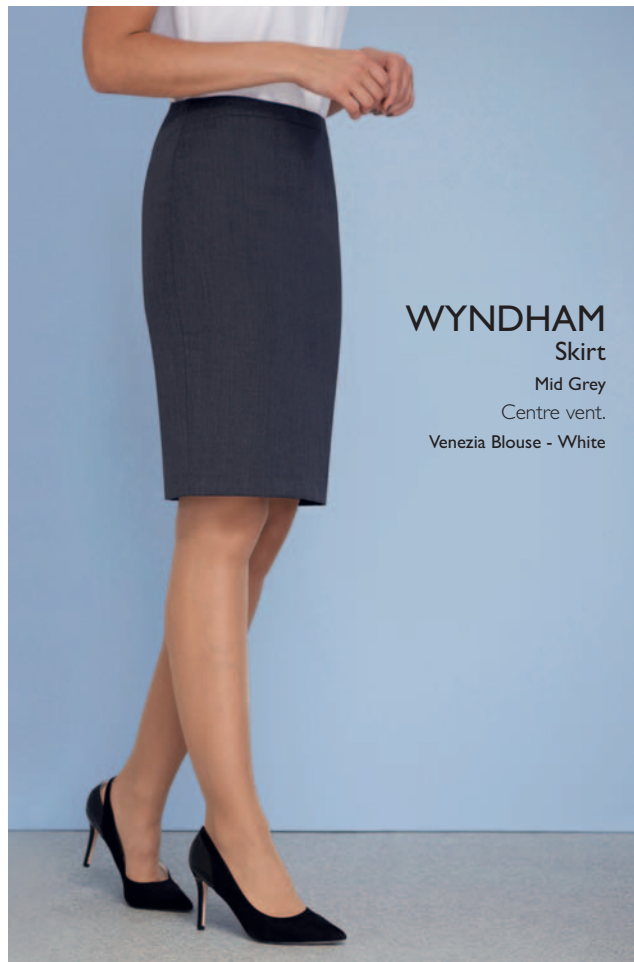
## WYNDHAM

Skirt

Mid Grey

Centre vent.

Venezia Blouse - White



**HOLBECK**

Slim Fit Jacket  
Charcoal  
2 button,  
side vents, slim lapels.

**HOLBECK**

Slim Fit Trousers  
Charcoal  
Flat front.  
Pisa Shirt - White

**ROSEWOOD**

Slim Fit Jacket  
Charcoal  
1 button,  
peaked lapel,  
plain back.  
Roma Blouse -  
Burgundy/Navy Print

**WYNDHAM**

Skirt  
Charcoal  
Centre vent,  
shaped back panels,  
full stretch lining.

SLIM FIT SUITING

## ALDWYCH Tailored Fit Jacket

Navy  
2 button,  
side vents.  
Monza Shirt - Blue Houndstooth



TAILORED FIT SUITING

## HOLBECK

### Slim Fit Jacket

Mid Grey

2 button,  
side vents, slim lapels.

Pisa Shirt - Sky Blue



## SLIM FIT SUITING

## CLASSIC FIT SUITING



## LANGHAM

### Classic Fit Jacket

Black

3 button,  
centre vent.

Prato Shirt - Blue Herringbone

## HOLBECK

### Slim Fit Trousers

Mid Grey  
Flat front.  
Pisa Shirt - White



**ALDWYCH**  
Tailored Fit Trousers  
Mid Grey  
Flat front.  
Rapino Shirt - Lilac



## LANGHAM

### Classic Fit Trousers

Black  
Single pleat,  
2 side pockets,  
1 rear pocket.  
Andora Shirt - Pink Herringbone

## CAPITAL

### Men's Waistcoat

Mid Grey  
5 button front,  
Lining backed  
with adjuster,  
2 welt pockets.  
Rapino Shirt - Lilac

## ALDWYCH

### Tailored Fit Trousers

Mid Grey  
Flat front.



# MEN'S PERFORMANCE SUMMARY

## HOLBECK

### Slim Fit Jacket

Navy

2 button, side vents, slim lapels with saddle stitching.

#### Sizes:

34" - 44" short  
34" - 46" regular  
34" - 44" long

#### Codes & Colours:

3500A Navy  
3500C Charcoal  
3500D Black  
3500G Mid Grey



Centre back length at size 40R = 75cm

## ALDWYCH

### Tailored Fit Jacket

Mid Grey

2 button, side vents.

#### Sizes:

36" - 48" short  
36" - 56" regular  
38" - 48" long

#### Codes & Colours:

3125A Navy  
3125C Charcoal  
3125D Black  
3125G Mid Grey



Centre back length at size 40R = 77cm

## HOLBECK

### Slim Fit Trousers

Navy

Flat front, 2 side pockets, 1 rear pocket.

#### Sizes:

28" - 40" waist in leg lengths  
S-29.5", R-31.5", L-33"  
& 36" unfinished

#### Codes & Colours:

8733A Navy  
8733C Charcoal  
8733D Black  
8733G Mid Grey

Half hem width at waist size 34" = 19cm



## ALDWYCH

### Tailored Fit Trousers

Charcoal

Flat front, 2 side pockets, 1 rear pocket.

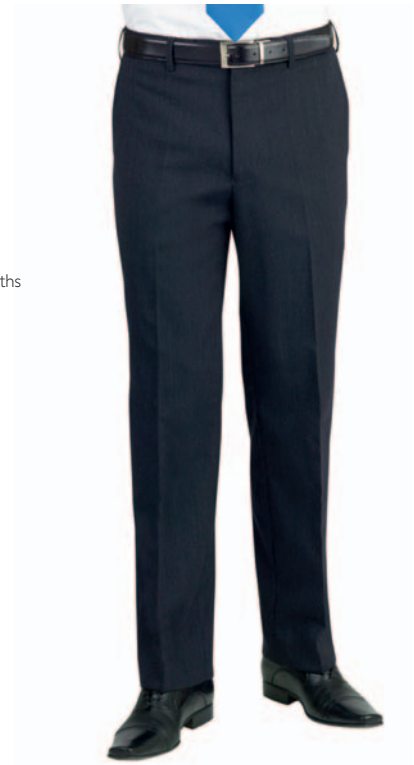
#### Sizes:

28" - 44" waist in leg lengths  
S-29.5", R-31.5", L-33"  
& 36" unfinished

#### Codes & Colours:

8557A Navy  
8557C Charcoal  
8557D Black  
8557G Mid Grey

Half hem width at waist size 34" = 21cm



- 65% Polyester, 35% Wool with Shape Memory Technology
- 325gm crease-resistant fabric
- Machine washable tailoring
- Martindale Test > 80,000 rubs



# MEN'S PERFORMANCE SUMMARY

BROOK TAVERNER  
corporate tailoring

## LANGHAM

### Classic Fit Jacket

Black

3 button,  
centre vent.

#### Sizes:

36" - 48" short  
36" - 60" regular  
38" - 48" long

#### Codes & Colours:

5984A Navy  
5984C Charcoal  
5984D Black



Centre back length at  
size 40R = 78cm

## CAPITAL

### Waistcoat

Black

5 button front,  
Lining backed  
with adjuster;  
2 welt pockets.

#### Sizes:

36" - 54" regular

#### Codes & Colours:

I300A Navy  
I300C Charcoal  
I300D Black  
I300G Mid Grey



## LANGHAM

### Classic Fit Trousers

Navy

Single pleat,  
2 side pockets,  
1 rear pocket.

#### Sizes:

28" - 56" waist in leg lengths  
S-29.5", R-31.5", L-33"  
& 36" unfinished

#### Codes & Colours:

8525A Navy  
8525C Charcoal  
8525D Black

Half hem width at  
waist size 34" = 22cm



# WOMEN'S PERFORMANCE SUMMARY

## ROSEWOOD Slim Fit Jacket

Navy

1 button, peaked lapel, 2 flap and 2 jetted pockets, plain back.

### Sizes:

6 - 16 petite  
4 - 18 regular  
6 - 16 long

### Codes & Colours:

2263A Navy  
2263C Charcoal  
2263D Black  
2263G Mid Grey



Centre back length at size 12R = 55.5cm

## RITZ Tailored Fit Jacket

Black

3 button, peaked lapels, centre vent.

### Sizes:

6 - 16 petite  
6 - 24 regular  
8 - 18 long

### Codes & Colours:

2227A Navy  
2227C Charcoal  
2227D Black  
2227G Mid Grey



Centre back length at size 12R = 58cm

## MAYFAIR Tailored Fit Jacket

Mid Grey

3 button, rounded lapel and pockets, plain back.

### Sizes:

6 - 16 petite  
6 - 24 regular  
8 - 18 long

### Codes & Colours:

2228A Navy  
2228C Charcoal  
2228D Black  
2228G Mid Grey



Centre back length at size 12R = 60.5cm

## CONNAUGHT Classic Fit Jacket

Charcoal

2 button, notch lapel, 1 inside pocket, centre vent.

### Sizes:

6 - 18 petite  
6 - 30\* regular  
8 - 24 long

### Codes & Colours:

2226A Navy  
2226C Charcoal  
2226D Black  
2226G Mid Grey

\*Mid Grey available to 24R only



Centre back length at size 12R = 65.5cm

- 65% Polyester, 35% Wool with Shape Memory Technology
- 325gm crease-resistant fabric
- Machine washable tailoring
- Martindale Test > 80,000 rubs

**NEW  
 FOR 2018!**

**HEMPEL**  
 Slim Leg Trousers  
 Navy

Side pockets  
 mock hip pockets.

**Sizes:**

4 - 24 waist in leg lengths  
 S-27", R-29", L-31", XL-33"  
 & 36" unfinished

**Codes & Colours:**

- 2306A Navy
- 2306C Charcoal
- 2306D Black
- 2306G Mid Grey



16cm  
 Half hem width at  
 size 12 = 16cm

**ASTORIA**  
 Tailored Leg Trousers  
 Mid Grey

Front hook fastening,  
 2 side pockets,  
 mock rear pockets,  
 half lined.

**Sizes:**

4 - 24 waist in leg lengths  
 S-27", R-29", L-31", XL-33"  
 & 36" unfinished

**Codes & Colours:**

- 2262A Navy
- 2262C Charcoal
- 2262D Black
- 2262G Mid Grey



21cm  
 Half hem width at  
 size 12 = 21cm

**GROSVENOR**  
 Straight Leg Trousers  
 Navy

Single button front  
 fastening, key  
 card pocket,  
 half lined, belt loops.

**Sizes:**

6 - 30 waist in leg lengths  
 S-27", R-29", L-31", XL-33"  
 & 36" unfinished

**Codes & Colours:**

- 2231A Navy
- 2231C Charcoal
- 2231D Black
- 2231G Mid Grey

Mid Grey available  
 to 24 only



22cm  
 Half hem width at  
 size 12 = 22cm

**DORCHESTER**  
 Parallel Leg Trousers  
 Charcoal

Low waist, front double  
 button fastening,  
 key card pocket, mock  
 rear pockets, half lined,  
 belt loops.

**Sizes:**

6 - 24 waist in leg lengths  
 S-27", R-29", L-31", XL-33"  
 & 36" unfinished

**Codes & Colours:**

- 2232A Navy
- 2232C Charcoal
- 2232D Black
- 2232G Mid Grey



23cm  
 Half hem width at  
 size 12 = 23cm

# WOMEN'S PERFORMANCE SUMMARY

## CORINTHIA

### Dress

Mid Grey

V-neck, short sleeve, breast darts, centre vent, full stretch lining.

#### Sizes:

6 - 24 regular  
8 - 20 long

#### Codes & Colours:

2246A Navy  
2246C Charcoal  
2246D Black  
2246G Mid Grey



Centre back length at size 12R = 97cm

## WALDORF

### Waistcoat

Black

4 button front, lining backed with adjuster; 2 welt pockets.

#### Sizes:

6 - 24 regular

#### Codes & Colours:

2260A Navy  
2260C Charcoal  
2260D Black  
2260G Mid Grey



## WYNDHAM

### Skirt

Navy

Centre vent, shaped back panels, full stretch lining.

#### Sizes:

4 - 24 regular - 22"  
8 - 30 long - 25"  
8 - 24 x-long - 27"

#### Codes & Colours:

2229A Navy  
2229C Charcoal  
2229D Black  
2229G Mid Grey

Mid Grey available to 24L only



## FASHION

### Belts

Twin Packs

Women's fashion belts, gold buckle.

#### Sizes:

XS 6  
S 8 - 10  
M 12 - 14  
L 16 - 18  
XL 20 - 22 - 24

#### Codes & Colours:

2248A Navy/Nude  
2248D Black/Nude



2248A Navy/Nude



2248D Black/Nude

- 65% Polyester, 35% Wool with Shape Memory Technology
- 325gm crease-resistant fabric
- Machine washable tailoring
- Martindale Test > 80,000 rubs

Our **PERFORMANCE** collection is available in up to 4 fabric colour choices.



A. Navy

C. Charcoal

D. Black

G. Mid Grey



## WASHCARE INSTRUCTIONS

### WASHING

For the best results ensure that the suit is washed separately & machine wash as wool. Garments will need to be removed immediately from the machine when the cycle has ended.

### DRYING

Place the jacket on the hanger; gently shake and re-shape by straightening seams. Fold the trousers to the front creases and hang over the bar on garment hanger. Allow both garments to dry naturally & keep away from direct heat. Do not tumble dry.

### FINISHING

If required, press the garments using a cool iron over a damp cloth. Alternatively, garments from the Performance Collection can be dry cleaned.



MACHINE WASHABLE 40°  
SUITABLE FOR DRY CLEANING (P)



- 65% Polyester, 35% Wool with Shape Memory Technology
- 325gm crease-resistant fabric
- Machine washable tailoring
- Martindale Test > 80,000 rubs

# ECLIPSE

## COLLECTION

13 piece collection in a choice of 4 colours

### WOMEN'S

#### SLIM FIT

ARIEL Jacket	68
OPHELIA Trouser	69

#### TAILORED FIT

CORDELIA Jacket	70
BIANCA Trouser	71
<b>LARISSA Waistcoat - NEW for 2018!</b>	<b>71</b>

#### DRESSES & SKIRT

CRESSIDA Dress	72
PORTIA Dress	68 - 73
JULIET Skirt	69 - 70

### WOMEN'S COLLECTION SUMMARY

Women's Jackets, Trousers, Waistcoat	
Dresses & Skirt	74 - 75

### MEN'S

#### SLIM FIT

PEGASUS Jacket	63 - 66
PEGASUS Trouser	63 - 66 - 67

#### TAILORED FIT

PHOENIX Jacket	64
PHOENIX Trouser	65
<b>PROTEUS Waistcoat - NEW for 2018!</b>	<b>65</b>

### MEN'S COLLECTION SUMMARY

Men's Jackets, Trousers & Waistcoat	76
-------------------------------------	----

### COLOUR CHOICE AND AFTERCARE

Eclipse Collection Fabric Colour Choice	77
---	----

- 64% Polyester, 34% Viscose, 2% Elastane
- 330gm fabric, Teflon finish
- Machine washable tailoring
- Martindale Test > 100,000 rubs
- Ideal for retail, hotels, front of house

**NEW FOR 2018**  
New colourway - solid navy  
LARISSA ladies' waistcoat - page 71  
PROTEUS men's waistcoat - page 65



Teflon™ is a registered Trademark of The Chemours Company FC, LLC used under License by Brook Taverne Ltd.



**PEGASUS**

Slim Fit Jacket

Navy Pin Dot

1 button fastening,

twin rear vents.

Chelsea Shirt - White

**PEGASUS**

Slim Fit Trouser

Navy Pin Dot

Flat front.

**PORTIA**

Dress

Navy Pin Dot

**SLIM FIT SUITING**

PHOENIX  
Tailored Fit Jacket

Navy  
2 button jacket,  
twin rear vents.

Andora Shirt - Lilac Herringbone

NEW  
COLOURWAY

TAILORED FIT SUITING



NEW  
FOR 2018!



NEW  
WAISTCOAT

**PROTEUS**  
Men's Waistcoat

Navy

Notch lapels,  
5 button front,  
cloth backed,  
2 welt pockets.

Prato Shirt - Blue Herringbone

**PHOENIX**  
Tailored Fit Trousers

Navy

Flat front.

Monza Shirt - Lilac Houndstooth





**PEGASUS**  
Slim Fit Jacket

Black

1 button fastening,  
twin rear vents.

Monza Shirt - Black Houndstooth

**PEGASUS**  
Slim Fit Trousers

Black

Flat front.

**SLIM FIT SUITING**

# PEGASUS

Slim Fit Trousers

Navy Pin Dot

Flat front.

Chelsea Shirt - White

BROOK TAVERNER  
corporate tailoring





**ARIEL**  
Slim Fit Jacket  
Black  
1 button jacket,  
centre vent.

**PORTIA**  
Dress  
Black  
Short sleeve,  
centre back vent,  
waistline darts.

**SLIM FIT SUITING**

# JULIET

## Skirt

Black  
Straight skirt, front  
and rear panel detail  
with centre vent,  
full stretch lining,  
Roma Blouse - Fuchsia



# OPHELIA

## Slim Fit Trousers

Navy Pin Dot  
Side pockets,  
mock hip pockets.  
Felina Blouse - White

**CORDELIA**  
Tailored Fit Jacket

Charcoal Pin Dot  
2 button jacket,  
centre vent.  
Roma Blouse - Royal Blue

**JULIET**  
Skirt

Charcoal Pin Dot  
Straight skirt,  
front and rear panel  
detail centre vent,



TAILORED FIT SUITING



NEW  
FOR  
2018!

**LARISSA**  
Ladies' Waistcoat

Navy  
Notch lapels, 5 button front,  
cloth backed, 2 welt pockets  
Parma Blouse - White

**BIANCA**  
Tailored Fit Trouser

Charcoal Pin Dot  
Side pockets, mock hip pockets.  
Prosecco Blouse - Pink Herringbone





## CRESSIDA Dress

Charcoal Pin Dot  
V-neck, capped sleeve,  
front crossover and  
pleat detail, side vents.



## PORTIA

### Dress

Black

Short sleeve,  
centre back vent,  
waistline darts.



WOMEN'S  
**ECLIPSE** SUMMARY

**ARIEL**  
 Slim Fit Jacket  
 Black

1 button jacket,  
 centre vent.

**Sizes:**  
 6 - 16 petite  
 4 - 24 regular  
 6 - 16 long

**Codes & Colours:**  
 2272A Navy Pin Dot  
 2272B Navy  
 2272C Charcoal Pin Dot  
 2272D Black



Centre back length at  
 size 12R = 55.5cm

**CORDELIA**  
 Tailored Fit Jacket  
 Charcoal Pin Dot

2 button jacket,  
 centre vent.

**Sizes:**  
 6 - 18 petite  
 4 - 30 regular  
 6 - 18 long

**Codes & Colours:**  
 2273A Navy Pin Dot  
 2273B Navy  
 2273C Charcoal Pin Dot  
 2273D Black



Centre back length at  
 size 12R = 63cm

**OPHELIA**  
 Slim Leg Trousers  
 Navy Pin Dot

Side pockets  
 mock hip pockets.

**Sizes:**  
 4 - 24 waist in leg lengths  
 S-27", R-29", L-31", XL-33"  
 & 36" unfinished

**Codes & Colours:**  
 2276A Navy Pin Dot  
 2276B Navy  
 2276C Charcoal Pin Dot  
 2276D Black



16cm

Half hem width at  
 size 12 = 16cm

**BIANCA**  
 Tailored Leg Trousers  
 Charcoal Pin Dot

Side pockets,  
 mock hip pockets.

**Sizes:**  
 6 - 30 waist in leg lengths  
 S-27", R-29", L-31", XL-33"  
 & 36" unfinished

**Codes & Colours:**  
 2277A Navy Pin Dot  
 2277B Navy  
 2277C Charcoal Pin Dot  
 2277D Black



21cm

Half hem width at  
 size 12 = 21cm

- 64% Polyester, 34% Viscose, 2% Elastane
- 330gm fabric, Teflon finish
- Machine washable tailoring
- Martindale Test >100,000 rubs

**PORTIA**

**Dress**

Black

Short sleeve,  
centre back vent,  
waistline darts.

**Sizes:**

4 - 24 regular  
8 - 20 long

**Codes & Colours:**

2274A Navy Pin Dot  
2274B Navy  
2274C Charcoal Pin Dot  
2274D Black



Centre back length at  
size 12R = 97cm

**NEW  
FOR 2018!**

**LARISSA**

**Waistcoat**

Navy

Notch lapels, 5 button  
front, cloth backed,  
2 welt pockets.

**Sizes:**

6 - 24 regular

**Codes & Colours:**

2293A Navy Pin Dot  
2293B Navy  
2293C Charcoal Pin Dot  
2293D Black



**CRESSIDA**

**Dress**

Black

V-neck, capped sleeve,  
front crossover and  
pleat detail, side vents.

**Sizes:**

6 - 24 regular  
8 - 20 long

**Codes & Colours:**

2285A Navy Pin Dot  
2285B Navy  
2285C Charcoal Pin Dot  
2285D Black



Centre back length at  
size 12R = 97cm

**JULIET**

**Straight Skirt**

Charcoal Pin Dot

Rear panel detail  
with centre vent,  
full stretch lining.

**Sizes:**

4 - 24 regular - 22"  
8 - 30 long - 25"

**Codes & Colours:**

2275A Navy Pin Dot  
2275B Navy  
2275C Charcoal Pin Dot  
2275D Black



- 64% Polyester, 34% Viscose, 2% Elastane
- 330gm fabric, Teflon finish
- Machine washable tailoring
- Martindale Test >100,000 rubs

# MEN'S ECLIPSE SUMMARY

## PEGASUS

**Slim Fit Jacket**  
Navy Pin Dot

1 button,  
twin rear vents.

**Sizes:**  
34" - 44" short  
34" - 46" regular  
34" - 44" long

**Codes & Colours:**  
3551A Navy Pin Dot  
3551B Navy  
3551C Charcoal Pin Dot  
3551D Black



Centre back length at  
size 40R = 76cm

## PHOENIX

**Tailored Fit Jacket**  
Charcoal Pin Dot

2 button,  
twin rear vents.

**Sizes:**  
36" - 48" short  
34" - 56" regular  
38" - 48" long

**Codes & Colours:**  
3552A Navy Pin Dot  
3552B Navy  
3552C Charcoal Pin Dot  
3552D Black



Centre back length at  
size 40R = 77cm

## PEGASUS

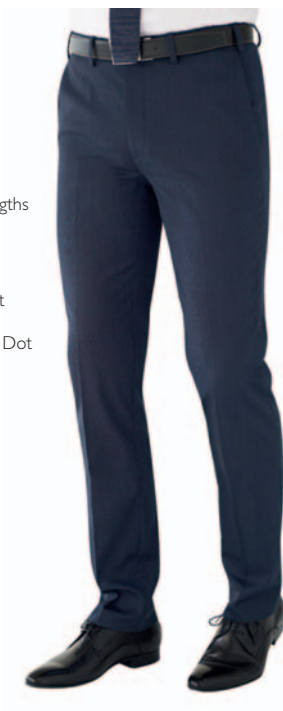
**Slim Fit Trousers**  
Navy Pin Dot

Flat front.

**Sizes:**  
28" - 40" waist in leg lengths  
S-29.5", R-31.5", L-33"  
& 36" unfinished

**Codes & Colours:**  
8754A Navy Pin Dot  
8754B Navy  
8754C Charcoal Pin Dot  
8754D Black

Half hem width at  
waist size 34" = 19cm



## PHOENIX

**Tailored Fit Trousers**  
Charcoal Pin Dot

Flat front.

**Sizes:**  
28" - 52" waist in leg lengths  
S-29.5", R-31.5", L-33"  
& 36" unfinished

**Codes & Colours:**  
8755A Navy Pin Dot  
8755B Navy  
8755C Charcoal Pin Dot  
8755D Black

Half hem width at  
waist size 34" = 21cm



## NEW FOR 2018!



## PROTEUS

**Waistcoat**  
Navy

Notch lapels, 5 button front,  
cloth backed, 2 welt pockets.

**Sizes:**  
34" - 56" regular

**Codes & Colours:**  
1449A Navy Pin Dot  
1449B Navy  
1449C Charcoal Pin Dot  
1449D Black

- 64% Polyester, 34% Viscose, 2% Elastane
- 330gm fabric, Teflon finish
- Machine washable tailoring
- Martindale Test > 100,000 rubs

# COLOUR CHOICE

Our ECLIPSE collection is available in 4 fabric colour choices.



A. Navy Pin Dot

B. Navy

C. Charcoal Pin Dot

D. Black



## WASHCARE INSTRUCTIONS

### WASHING

For the best results ensure that the suit is washed separately & machine wash as wool. Garments will need to be removed immediately from the machine when the cycle has ended.

### DRYING

Place the jacket on the hanger; gently shake and re-shape by straightening seams. Fold the trousers to the front creases and hang over the bar on garment hanger. Allow both garments to dry naturally & keep away from direct heat. Do not tumble dry.

### FINISHING

If required, press the garments using a cool iron over a damp cloth. Alternatively, garments from the Eclipse Collection can be dry cleaned.



MACHINE WASHABLE 40°  
SUITABLE FOR DRY CLEANING (P)



Teflon™ is a registered Trademark of The Chemours Company FC, LLC used under License by Brook Taverner Ltd.

- 64% Polyester, 34% Viscose, 2% Elastane
- 330gm fabric, Teflon finish
- Machine washable tailoring
- Martindale Test >100,000 rubs

# CONCEPT

## COLLECTION

10 piece collection in a choice of 3 colours

### WOMEN'S

#### TAILORED FIT

HEBE Jacket	82
AURA Trouser	83

#### CLASSIC FIT

OMEGA Waistcoat	83
SIGMA Skirt	83

### WOMEN'S COLLECTION SUMMARY

Women's Jacket, Trouser, Waistcoat & Skirt	86
--	----

### MEN'S

#### TAILORED FIT

ZEUS Jacket	79
APOLLO Trouser	79 - 81
GAMMA Waistcoat	81

#### CLASSIC FIT

ALPHA Jacket	81
DELTA Trouser	80
ATLAS Trouser	80

### MEN'S COLLECTION SUMMARY

Men's Jackets, Trousers & Waistcoat	84 - 85
-------------------------------------	---------

### COLOUR CHOICE AND AFTERCARE

Concept Collection Fabric Colour Choice	87
---	----

- 65% Polyester, 35% Viscose
- 390gm fabric
- Machine washable tailoring
- Martindale Test > 80,000 rubs
- Ideal for FM, security, transport, hospitality, health sector





## **ZEUS**

### **Tailored Fit Jacket**

Navy

2 button,

2 slant pockets,

side vents,

3 inside pockets.

Rapino Shirt - Blue

## **APOLLO**

### **Flat Front Trouser**

Navy

Flat front,

2 side pockets,

1 rear pocket.

**TAILORED FIT SUITING**



**DELTA**  
Classic Fit Trousers

Charcoal  
Single pleat,  
2 side pockets,  
1 rear pocket.  
Alba Shirt - White

**ATLAS**  
Classic Fit Trousers

Black  
Single pleat, with  
waistcase function,  
2 side pockets,  
1 rear pocket  
Rapino Shirt - Grey



ATLAS TROUSER WITH  
WAISTCASE FUNCTION



# CLASSIC FIT SUITING



## ALPHA Classic Fit Jacket

Charcoal  
3 button,  
2 straight pockets,  
centre vent,  
3 inside pockets.  
Juno Shirt - Blue

## GAMMA Waistcoat

Black  
6 button front,  
2 welt pockets,  
cloth backed,  
longer back  
with adjuster.  
Vesta Shirt - White

## APOLLO Flat Front Trouser

Black  
Flat front,  
2 side pockets,  
1 rear pocket.  
Vesta Shirt - White



## HEBE

### Tailored Fit Jacket

Charcoal

2 button, notch lapel,

2 slanted flap pockets,

1 inside pocket,

centre vent.

Franca Blouse - White



TAILORED FIT SUITING



**AURA**  
Tailored Leg Trousers  
Charcoal  
Slim waistband,  
2 side pockets,  
mock rear pockets,  
belt loops.  
Franca Blouse - White

**OMEGA**

Waistcoat  
Navy  
Centre vent,  
shaped back panels,  
full stretch lining.  
Eos Blouse - White



**SIGMA**  
Skirt  
Navy  
Centre vent.  
Eos Blouse - White

# MEN'S CONCEPT SUMMARY

## ZEUS

### Tailored Fit Jacket

Charcoal

2 button,  
2 slant pockets,  
side vents, 3 inside  
pockets.

#### Sizes:

36" - 48" short  
34" - 56" regular  
38" - 48" long

#### Codes & Colours:

3124A Navy  
3124C Charcoal  
3124D Black



Centre back length at  
size 40R = 77cm

## ALPHA

### Classic Fit Jacket

Navy

3 button,  
2 straight pockets  
centre vents,  
3 inside pockets.

#### Sizes:

38" - 44" short  
36" - 60" regular  
40" - 48" long

#### Codes & Colours:

5981A Navy  
5981C Charcoal  
5981D Black



Centre back length at  
size 40R = 78cm

## APOLLO

### Tailored Fit Trousers

Charcoal

Flat front,  
2 side pockets,  
1 rear pocket.

#### Sizes:

28" - 50" waist in leg  
lengths  
S-29.5", R-31.5", L-33"  
& 36" unfinished

#### Codes & Colours:

8627A Navy  
8627C Charcoal  
8627D Black

Half hem width at  
waist size 34" = 21cm



## DELTA

### Classic Fit Trousers

Charcoal

Single pleat,  
2 side pockets,  
1 rear pocket.

#### Sizes:

28" - 54" waist in leg  
lengths  
S-29.5", R-31.5", L-33"  
& 36" unfinished

#### Codes & Colours:

8515A Navy  
8515C Charcoal  
8515D Black

Half hem width at  
waist size 34" = 22cm



- 65% Polyester, 35% Viscose
- 390gm fabric
- Machine washable tailoring
- Martindale Test > 80,000 rubs

## GAMMA

Cloth backed waistcoat  
Black

6 button front,  
2 welt pockets,  
cloth backed with  
adjuster:

### Sizes:

36" - 56" regular

### Codes & Colours:

1094A Navy

1094C Charcoal

1094D Black



## ATLAS

Classic Fit Trousers

Navy

Single pleat with  
waistease function  
2 side pockets,  
1 rear pocket.

### Sizes:

28" - 54" waist in leg  
lengths  
S-29.5", R-31.5", L-33"  
& 36" unfinished

### Codes & Colours:

8732A Navy

8732C Charcoal

8732D Black

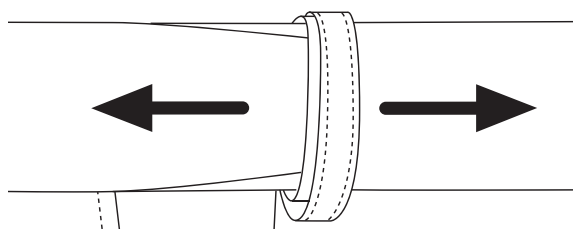
Half hem width at  
waist size 34" = 22cm



## ATLAS TROUSER WITH WAISTEASE FUNCTION

We are delighted to introduce our ATLAS trouser!

The ATLAS has the same cut and fit as our best-selling Delta trouser; but also benefits from a stretch waistease function. This provides extra space in the waist area, bringing such benefits as freedom of movement, support and comfort - a definite plus for wearers in the transport, security and FM sectors.



# WOMEN'S CONCEPT SUMMARY

## HEBE

### Tailored Fit Jacket

Charcoal

2 button, notch lapel, 2 slanted flap pockets, 1 inside pocket, centre vent.

#### Sizes:

8 - 16 short  
4 - 24 regular  
10 - 18 long

#### Codes & Colours:

2254A Navy  
2254C Charcoal  
2254D Black



Centre back length at size 12R = 65.5cm

## OMEGA

### Cloth backed waistcoat

Navy

6 button front, 2 welt pockets, cloth backed with adjuster.

#### Sizes:

6 - 24 regular

#### Codes & Colours:

2233A Navy  
2233C Charcoal  
2233D Black



## AURA

### Tailored Leg Trousers

Black

Slim waistband, 2 side pockets, mock rear pockets, belt loops.

#### Sizes:

4 - 24 waist in leg lengths  
S-27", R-29", L-31", XL-33"  
& 36" unfinished

#### Codes & Colours:

2259A Navy  
2259C Charcoal  
2259D Black



21 cm

Half hem width at size 12 = 21cm

- 65% Polyester, 35% Viscose
- 390gm fabric
- Machine washable tailoring
- Martindale Test > 80,000 rubs

## SIGMA

### Straight Skirt

Black

Centre vent, fully lined.

#### Sizes:

4 - 24 regular - 22"  
8 - 18 long - 25"

#### Codes & Colours:

2221A Navy  
2221C Charcoal  
2221D Black



Our **CONCEPT** collection is available in up to 3 fabric colour choices.



A. Navy

C. Charcoal

D. Black



## WASHCARE INSTRUCTIONS

### WASHING

For the best results ensure that the suit is washed separately & machine wash as wool. Garments will need to be removed immediately from the machine when the cycle has ended.

### DRYING

Place the jacket on the hanger; gently shake and re-shape by straightening seams. Fold the trousers to the front creases and hang over the bar on garment hanger. Allow both garments to dry naturally & keep away from direct heat. Do not tumble dry.

### FINISHING

If required, press the garments using a cool iron over a damp cloth. Alternatively, garments from the Concept Collection can be dry cleaned.



MACHINE WASHABLE 30°  
SUITABLE FOR DRY CLEANING (P)



- 65% Polyester, 35% Viscose
- 390gm fabric
- Machine washable tailoring
- Martindale Test > 80,000 rubs

# ONE

## COLLECTION

8 piece collection in Black & Navy

### WOMEN'S

#### TAILORED FIT

SATURN Jacket	89
VENUS Trouser	90
LUNA Waistcoat	91

#### DRESS & SKIRT

NEPTUNE Dress - NEW for 2018!	91
PLUTO Skirt	91

### WOMEN'S COLLECTION SUMMARY

Women's Jacket, Trouser, Dress, Skirt & Waistcoat	95
--	----

### MEN'S

#### TAILORED FIT

JUPITER Jacket	92
MARS Trouser	92 - 93
MERCURY Waistcoat	93

### MEN'S COLLECTION SUMMARY

Men's Jacket, Trouser & Waistcoat	94
-----------------------------------	----

### COLOUR CHOICE AND AFTERCARE

One Collection Fabric Colour Choice	97
-------------------------------------	----

- 100% Superfine Polyester
- 335gm fabric
- Machine washable tailoring
- Martindale Test >100,000 rubs
- Neptune dress fabric 95% polyester/5% elastane, 220gm
- Ideal for hospitality, schools, FM & health sector



NEW FOR 2018  
NEPTUNE dress - page 91





**SATURN**  
Tailored Fit Jacket

Black  
1 button,  
slim lapel  
with seam detail,  
centre vent.  
Verona Blouse - Black/White Print

TAILORED FIT SUITING

## VENUS

### Tailored Leg Trousers

Black

Belt loops &  
key loop,  
2 side pockets.

Trevi Blouse - Sky Blue



KEY LOOP

## LUNA Waistcoat

Black  
5 button front,  
2 welt pockets,  
lining backed  
with adjuster.  
Soave Blouse - Sky Blue



## PLUTO Skirt

Navy  
Straight,  
centre vent,  
fully lined.  
Perano Blouse -  
Blue/White Stripe



## NEPTUNE Dress

Navy  
3/4 sleeve,  
round neck,  
flattering fit with  
waistline detail,  
stretch lining.



BROOK TAVERNER  
corporate tailoring

NEW  
FOR  
2018!

## JUPITER

### Tailored Fit Jacket

Navy  
Single breasted,  
2 button jacket,  
side vents.  
Alba Shirt - White

## MARS

### Tailored Fit Trousers

Navy  
Flat front,  
key loop,  
2 side pockets.

# TAILORED FIT SUITING

## MERCURY

### Waistcoat

Black

5 button front,  
2 welt pockets,  
lining backed  
with adjuster.

Pisa Shirt - Sky Blue



## MARS

### Tailored Fit Trousers

Navy

Flat front,  
key loop,  
2 side pockets,

Alba Shirt - White

## KEY LOOP

# MEN'S ONE SUMMARY

## JUPITER

Tailored Fit Jacket  
Black

Single breasted,  
2 button front,  
side vents.

### Sizes:

38" - 44" short  
34" - 50" regular  
40" - 46" long

### Codes & Colours:

3344A Navy  
3344D Black



Centre back length at  
size 40R = 76cm

## MERCURY

Lining backed waistcoat  
Navy

5 button front,  
2 welt pockets,  
lining backed with  
adjuster.

### Sizes:

XS 34" - 36"  
S 38" - 40"  
M 42" - 44"  
L 46" - 48"  
XL 50" - 52"

### Codes & Colours:

1295A Navy  
1295D Black



## MARS

Tailored Fit Trousers  
Black

Flat front, key loop,  
2 side pockets,  
1 rear pocket.

### Sizes:

30" - 42"  
short, inside leg length 29.5"  
26" - 48"  
regular, inside leg length 31.5"  
30" - 42"  
long, inside leg length 33"  
26" - 48"  
unfinished, inside leg length 36"

### Codes & Colours:

8648A Navy  
8648D Black

Half hem width at  
waist size 34" = 21cm



- 100% Superfine Polyester
- 335gm fabric
- Machine washable tailoring
- Martindale Test >100,000 rubs

**SATURN**  
Tailored Fit Jacket  
Black

1 button,  
slim lapel with  
seam detail,  
centre vent.

**Sizes:**  
8 - 16 short  
4 - 26 regular  
10 - 18 long

**Codes & Colours:**  
2255A Navy  
2255D Black



Centre back length at  
size 12R = 56cm

**NEW**  
FOR 2018!

**NEPTUNE**  
Dress  
Navy

95% polyester/  
5% elastane, 220g,  
3/4 sleeve,  
round neck,  
flattering fit with  
waistline detail,  
stretch lining.

**Sizes:**  
XS 6-8  
S 10-12  
M 14-16  
L 18-20  
XL 22-24

**Codes & Colours:**  
2287A Navy  
2287D Black



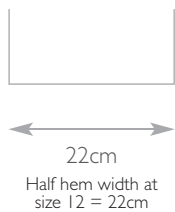
Centre back length at  
size 12R = 96.5cm

**VENUS**  
Tailored Leg Trousers  
Black

Slim waistband,  
belt loops & key loop,  
2 side pockets,  
mock rear pockets,

**Sizes:**  
4 - 26 waist in leg lengths  
R-29", L-31", XL-33"  
& 36" unfinished

**Codes & Colours:**  
2256A Navy  
2256D Black

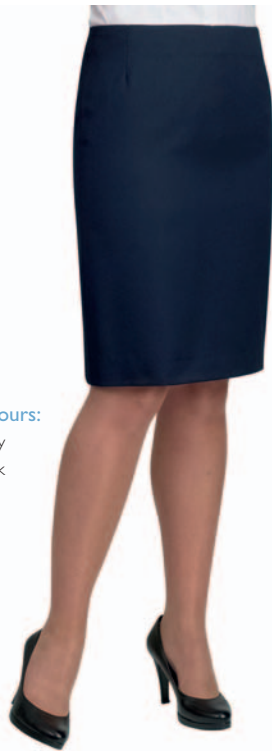


**PLUTO**  
Skirt  
Navy

Straight,  
centre vent,  
fully lined.

**Sizes:**  
4 - 26 regular  
length 22"

**Codes & Colours:**  
2258A Navy  
2258D Black



**LUNA**  
Lining backed  
waistcoat  
Navy

5 button front,  
2 welt pockets,  
lining backed with  
adjuster.

**Sizes:**  
XS 4 - 6  
S 8 - 10  
M 12 - 14  
L 16 - 18  
XL 20 - 22  
XXL 24 - 26

**Codes & Colours:**  
2257A Navy  
2257D Black



- 100% Superfine Polyester
- 335gm fabric
- Machine washable tailoring
- Martindale Test >100,000 rubs
- Neptune dress fabric 95% polyester/5% elastane, 220gm





# FABRIC

## COLOUR CHOICE

Our ONE collection is available in Black & Navy.

BROOK TAVERNER  
corporate tailoring



A. Navy

D. Black



## WASHCARE INSTRUCTIONS

### WASHING

For the best results ensure that the suit is washed separately & machine wash as wool. Garments will need to be removed immediately from the machine when the cycle has ended.

### DRYING

Place the jacket on the hanger; gently shake and re-shape by straightening seams. Fold the trousers to the front creases and hang over the bar on garment hanger. Allow both garments to dry naturally & keep away from direct heat. Do not tumble dry.

### FINISHING

If required, press the garments using a cool iron over a damp cloth. Alternatively, garments from the One Collection can be dry cleaned.



MACHINE WASHABLE 40°  
SUITABLE FOR DRY CLEANING (P)



- 100% Superfine Polyester
- 335gm fabric
- Machine washable tailoring
- Martindale Test >100,000 rubs
- Neptune dress fabric 95% polyester/5% elastane, 220gm

# SHIRT & BLOUSE

## COLLECTION



**PREMIUM COTTON**  
Collection

**Pages 100 - 109**  
Premium Cotton

Collection of men's and ladies' shirts and blouses in premium cotton fabric. Slim and classic fit options available.



**CREPE DE CHINE**  
Collection

**Pages 110 - 117**  
Crepe de Chine

Beautiful crepe de chine blouses in a variety of colours and designs

### **NEW FOR 2018!**

- Capri & Siena blouses, page 111
- Firenze & Venezia blouses, page 112
- New Navy colourway, pages 112 - 115



**STRETCH TOPS**  
Collection

**Pages 118 - 119**  
Stretch Tops

Superb quality ladies' stretch tops offering day to day practicality.

Our beautiful Shirt & Blouse Collection continues to go from strength to strength. The collection offers a superb range of coordinating shirts and blouses, in a variety of beautiful fabrics, fits and styles. 2018 brings new styles and a new colour in our crepe de chine ladies' blouses, along with two new colourways and styles in our cotton rich shirts and blouses. Designed to complement our suiting collections, our shirts and blouses are manufactured to our usual high standard and offer a stock supported solution for all corporate arenas.



**STRETCH COTTON BLEND**  
Collection

**Pages 120 - 122**  
Stretch Cotton Blend

A stretch blend fabric which gives great wearer comfort. Slim fit styles available.



**COTTON RICH**  
Collection

**Pages 123 - 133**  
Cotton Rich

A great range of high quality shirts and blouses with a large range of styles, colours and fits.

**NEW FOR 2018!**

- Colours Grey and Navy in best-selling styles, pages 123 - 127
- Parma & Modena blouses, page 123



**BUSINESS ESSENTIALS**  
One Collection Value Range

**Pages 134 - 139**  
Business Essentials

Business essentials - premium quality shirts and blouses offering fantastic performance and value for money.



# PREMIUM COTTON



## 100% SUPERFINE COTTON - HERRINGBONE WEAVE - EASY IRON

MEN'S **ANDORA** Classic fit, Double cuff **ALTARE** Classic fit, Single cuff **PRATO** Slim fit, Double cuff

- Double cuff with complementary silk cuff knots (except Altare)
- Taped seams
- Removable metal collar stiffeners
- Men's extra long sleeve available



**ANDORA Shirt**  
Classic fit, Double cuff

**Codes & Colours:**

- 7656A White Herringbone
- 7656AL White Herringbone  
Extra long sleeve 36.5"
- 7656B Blue Herringbone
- 7656BL Blue Herringbone  
Extra long sleeve 36.5"
- 7656F Pink Herringbone
- 7656G Lilac Herringbone

**Sizes:** 14.5"- 20"

\* Extra long sleeve 36.5" at size 15.5"

**ALTARE Shirt**  
Classic fit, Single cuff

**Codes & Colours:**

- 7655A White Herringbone
- 7655AL White Herringbone  
Extra long sleeve 36.5"
- 7655B Blue Herringbone
- 7655BL Blue Herringbone  
Extra long sleeve 36.5"

**Sizes:** 14.5"- 20"

\* Extra long sleeve 36.5" at size 15.5"

**PRATO shirt**  
Slim fit, Double cuff

**Codes & Colours:**

- 7720A White Herringbone
- 7720B Blue Herringbone

**Sizes:** 14.5"- 18"



**ANDORA Shirt**  
Classic fit, Double cuff



**ALTARE Shirt**  
Classic fit, Single cuff



**PRATO Shirt**  
Slim fit, Double cuff

# SLIM FIT DOUBLE CUFF

BROOK TAVERNER  
corporate tailoring



SHIRT & BLOUSE COLLECTION



SEMI FITTED  
DOUBLE CUFF

# PREMIUM COTTON



## 100% SUPERFINE COTTON - HERRINGBONE WEAVE - EASY IRON

WOMEN'S **VILLETA** Semi fitted, Double cuff

WOMEN'S **OZZERO** Semi fitted, Short sleeve

- Double cuff with complementary silk cuff knots (except Ozzero)
- Taped seams



**VILLETA Blouse**  
Semi fitted, Double cuff



**OZZERO Blouse**  
Semi fitted, Short sleeve

**VILLETA Blouse**  
Semi fitted, Double cuff

**Codes & Colours:**  
2247A White Herringbone  
2247B Blue Herringbone

**Sizes:** 6 - 24 regular

**OZZERO Blouse**  
Semi fitted, Short sleeve

**Codes & Colours:**  
2249A White Herringbone  
2249B Blue Herringbone

**Sizes:** 6 - 24 regular



**VILLETA Blouse**  
(Semi fitted, Double cuff)



**OZZERO Blouse**  
(Semi fitted, Short sleeve)



# PREMIUM COTTON



## 100% SUPERFINE COTTON - HERRINGBONE WEAVE - EASY IRON

MEN'S **ANDORA** Classic fit, Double cuff

WOMEN'S **PROSECCO** Long sleeve, Single cuff

WOMEN'S **CHIANTI** Semi fitted, Short sleeve

- Double cuff with complementary silk cuff knots (men's Andora)
- Taped seams
- Fly front (ladies' Prosecco and Chianti)



**ANDORA Shirt**  
Classic fit, Double cuff

**Codes & Colours:**

- 7656A White Herringbone
- 7656AL White Herringbone  
Extra long sleeve 36.5"
- 7656B Blue Herringbone
- 7656BL Blue Herringbone  
Extra long sleeve 36.5"
- 7656F Pink Herringbone
- 7656G Lilac Herringbone

**Sizes:** 14.5" - 20"

\* Extra long sleeve 36.5" at size 15.5"

**PROSECCO Blouse**  
Long sleeve, Single cuff, button up collar

**Codes & Colours:**

- 2283F Pink Herringbone
- 2283G Lilac Herringbone

**Sizes:** 6R - 24R

**CHIANTI Blouse**  
Semi fitted, Short Sleeve, button up collar

**Codes & Colours:**

- 2284F Pink Herringbone
- 2284G Lilac Herringbone

**Sizes:** 6R - 24R



**ANDORA Shirt**  
Classic fit, Double cuff



**PROSECCO Blouse**  
(Long sleeve, Single cuff)



**CHIANTI Blouse**  
(Semi fitted, Short sleeve)





ANDORA Shirt



CHIANTI Blouse



PROSECCO Blouse

# PREMIUM COTTON



100% SUPERFINE COTTON - EASY IRON - LONG SLEEVE

WOMEN'S **TREVISO** Semi fitted, Single cuff

- Single 3 button cuff
- Classic button up collar



## SEMI FITTED 3 BUTTON CUFF



**TREVISO Blouse**  
Semi fitted, Single cuff

**Codes & Colours:**

2244A White  
2244B Blue

**Sizes:** 6 - 24 regular



**TREVISO Blouse**  
Semi fitted, Single cuff

# PREMIUM COTTON



100% SUPERFINE COTTON - EASY IRON - LONG SLEEVE

MEN'S **CHESTER** Classic fit, Double cuff

MEN'S **CHEADLE** Classic fit, Single cuff

- Taped seams
- Removable metal collar stiffeners
- Men's extra long sleeve available



**CHESTER** Shirt  
Classic fit, Double cuff

**Codes & Colours:**

7642A White

7642B Blue

**Sizes:** 14.5" - 20"



**CHESTER** Shirt  
Classic fit, Double cuff

**CHEADLE** Shirt  
Classic fit, Single cuff

**Codes & Colours:**

7641A White

7641AL White  
Extra long sleeve 36.5"

7641B Blue

**Sizes:** 14.5" - 20"

\* Extra long sleeve 36.5" at size 15.5"



**CHEADLE** Shirt  
Classic fit, Single cuff

## CLASSIC FIT

# PREMIUM COTTON



100% SUPERFINE COTTON - EASY IRON - LONG SLEEVE

MEN'S **CHELFORD** Slim fit, Double cuff

- Taped seams
- Removable metal collar stiffeners



**CHELFORD Shirt**  
Slim fit, Double cuff

**Codes & Colours:**

7643A White

7643B Blue

**Sizes:** 14.5" - 18"



## SLIM FIT DOUBLE CUFF



**CHELFORD Shirt**  
Slim fit, Double cuff

# PREMIUM COTTON



100% SUPERFINE COTTON - EASY IRON - LONG SLEEVE

MEN'S CHELSEA Slim fit, Single cuff

- Taped seams
- Removable metal collar stiffeners



CHELSEA Shirt  
Slim fit, Single cuff

Codes & Colours:  
7762A White  
7762B Blue

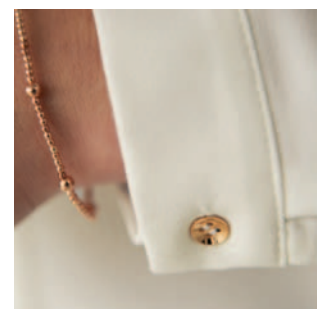
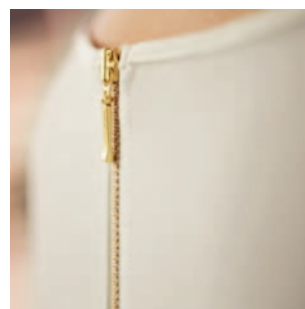
Sizes: 14.5" - 18"



## SLIM FIT SINGLE CUFF



CHELSEA Shirt  
Slim fit, Single cuff



# CREPE DE CHINE



## WHITE & CREAM - 94% POLYESTER / 6% ELASTANE - EASY CARE

WOMEN'S **CAPRI / SIENA** Long and Short Sleeve with Collar and Fly Front with Button Detail

- 94% Polyester / 6% Elastane
- Sizes: 6R - 30R
- Long & Short sleeve women's blouses with fly front with button detail
- Central back pleat
- Metallic button cuff (Capri)
- Easy care, machine washable at 30°

# NEW FOR 2018!



Sizes: 6R - 30R

### CAPRI Blouse Long sleeve

Codes & Colours:  
2300A White  
2300B Cream

Sizes:  
6R - 30R



CAPRI Blouse  
Long sleeve

### SIENA Blouse Short sleeve

Codes & Colours:  
2301A White  
2301B Cream

Sizes:  
6R - 30R



SIENA Blouse  
Short sleeve

WOMEN'S **RIOLA / FELINA** Long and Short Sleeve with Round Neck and Front Pleat Detail

- 94% Polyester / 6% Elastane
- Sizes: 6R - 30R
- Long & Short sleeve women's blouses, round neck, front pleat detail, bust darts
- Single gold button cuff (Riola)
- Rear gold zip detail
- Easy care, machine washable at 30°



Sizes: 6R - 30R

### RIOLA Blouse Long sleeve

Codes & Colours:  
2264A White  
2264B Cream

Sizes:  
6R - 30R



RIOLA Blouse  
Long sleeve

### FELINA Blouse Short sleeve

Codes & Colours:  
2265A White  
2265B Cream

Sizes:  
6R - 30R



FELINA Blouse  
Short sleeve

# CREPE DE CHINE



## SOLID COLOURS - 100% POLYESTER - EASY CARE

WOMEN'S **FIRENZE** Long Sleeve with Collar and Fly Front with Button Detail

WOMEN'S **VENEZIA** Short Sleeve with Collar and Fly Front with Button Detail

- 100% Polyester with mechanical stretch
- Sizes: 6R - 30R
- Long & Short sleeve women's blouses with fly front with button detail
- Central back pleat
- Metallic button cuff (Firenze)
- Easy care, machine washable at 30°

# NEW FOR 2018!



WOMEN'S **FIRENZE** Long sleeve **Sizes:** 6R - 30R

**Codes & Colours:**

Fuchsia  
2298A

Sky Blue  
2298B

Navy  
2298J

WOMEN'S **VENEZIA** Short sleeve **Sizes:** 6R - 30R

**Codes & Colours:**

Fuchsia  
2299A

Sky Blue  
2299B

Navy  
2299J



**FIRENZE Blouse**  
(Long sleeve)



**VENEZIA Blouse**  
(Short sleeve)







# CREPE DE CHINE



SOLID COLOURS - 100% POLYESTER - EASY CARE

WOMEN'S **ROMA** Long sleeve

WOMEN'S **VERONA** Short sleeve

- 100% Polyester with mechanical stretch
- Sizes: 6R - 30R
- Long & Short sleeve women's blouses, round neck, front pleat detail, bust darts
- Single gold button cuff (Roma)
- Rear gold zip detail
- Easy care, machine washable at 30°

**NEW!**  
Navy colourway

WOMEN'S **ROMA** Long sleeve **Sizes:** 6R - 30R



Codes & Colours:

Fuchsia  
2279A

Sky Blue  
2279B

Burgundy  
2279C

Black  
2279D

Royal Blue  
2279E

Navy  
2279J



**ROMA Blouse**  
(Long sleeve)

WOMEN'S **VERONA** Short sleeve **Sizes:** 6R - 30R



Codes & Colours:

Fuchsia  
2280A

Sky Blue  
2280B

Burgundy  
2280C

Black  
2280D

Royal Blue  
2280E

Navy  
2280J



**VERONA Blouse**  
(Short sleeve)



# CREPE DE CHINE



CO-ORDINATING DESIGNS - 100% POLYESTER - EASY CARE

WOMEN'S **ROMA** Long sleeve

WOMEN'S **VERONA** Short sleeve

- 100% Polyester with mechanical stretch
- Sizes: 6R - 30R
- Long & Short sleeve women's blouses, round neck, front pleat detail, bust darts
- Single gold button cuff (Roma)
- Rear gold zip detail
- Easy care, machine washable at 30°

WOMEN'S **ROMA** Long sleeve **Sizes: 6R - 30R**



ROMA Blouse  
Long sleeve

Codes & Colours:

Royal Blue/Navy  
2279H

Sky Blue/Navy  
2279F

Burgundy/Navy  
2279G

Black/White  
2279I

WOMEN'S **VERONA** Short sleeve **Sizes: 6R - 30R**



VERONA Blouse  
Short sleeve

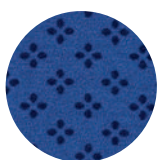
Codes & Colours:

Royal Blue/Navy  
2280H

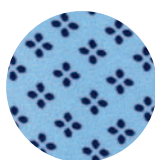
Sky Blue/Navy  
2280F

Burgundy/Navy  
2280G

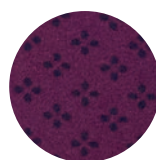
Black/White  
2280I



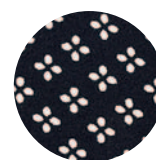
H. Royal Blue/Navy



F. Sky Blue/Navy



G. Burgundy/Navy



I. Black/White

# STRETCH TOPS



BLACK & WHITE - 95% VISCOSE / 5% ELASTANE - EASY CARE

WOMEN'S **MIRA** 3/4 sleeve

WOMEN'S **SASSA** Short sleeve

- 95% Viscose / 5% Elastane
- Sizes: XS, S, M, L, XL, XXL
- 3/4 & Short sleeve women's stretch tops
- Machine washable at 30°



**MIRA Stretch Top**  
3/4 sleeve

**Codes & Colours:**

2266A White

2266D Black

**Sizes:**

XS, S, M, L, XL, XXL



**SASSA Stretch Top**  
Short sleeve

**Codes & Colours:**

2267A White

2267D Black

**Sizes:**

XS, S, M, L, XL, XXL



**MIRA Stretch Top**  
3/4 sleeve



**SASSA Stretch Top**  
Short sleeve



# STRETCH COTTON BLEND

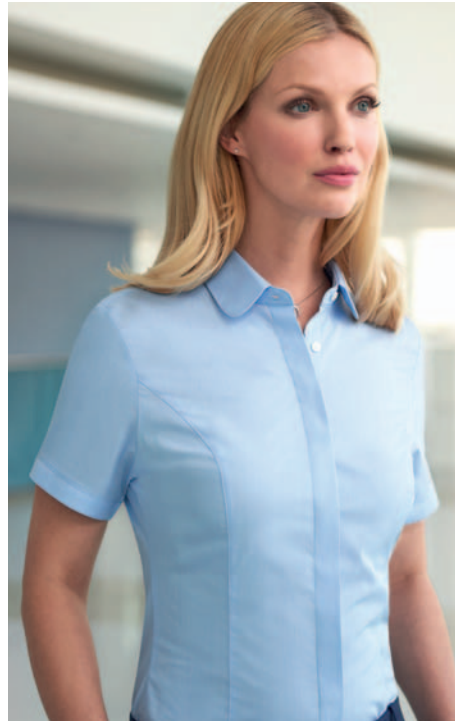


57% POLYESTER / 39% COTTON / 4% ELASTANE - SEMI FITTED

WOMEN'S **TREVI** Semi fitted, Long sleeve, Single cuff

WOMEN'S **SOAVE** Semi fitted, Short sleeve

- Fly front
- Rounded collar
- Single button cuff (Trevi)



**TREVI Blouse**  
Semi fitted, Single cuff

**Codes & Colours:**  
2268A White  
2268B Sky Blue  
2268D Black

**Sizes:** 6 - 24 regular



**TREVI Blouse**  
Semi fitted, Single cuff

**SOAVE Blouse**  
Semi fitted, Short sleeve

**Codes & Colours:**  
2269A White  
2269B Sky Blue  
2269D Black

**Sizes:** 6 - 24 regular



**SOAVE Blouse**  
Semi fitted, Short sleeve



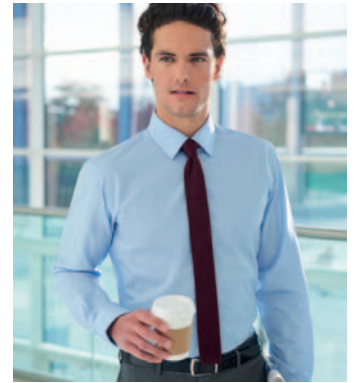
# STRETCH COTTON BLEND



57% POLYESTER / 39% COTTON / 4% ELASTANE - SLIM FIT - LONG SLEEVE

MEN'S PISA Slim fit, Long sleeve, Single cuff

- Single 2 button cuff
- Twin rear darts for defined silhouette



PISA Shirt  
Slim fit, Single cuff

Codes & Colours:

- 7721A White
- 7721B Sky Blue
- 7721D Black

Sizes: 14.5" - 18"



PISA Shirt  
Slim fit, Single cuff

## SLIM FIT

SINGLE CUFF

# STRETCH COTTON BLEND



57% POLYESTER / 39% COTTON / 4% ELASTANE - EASY IRON - LONG SLEEVE

WOMEN'S **FRANCA** Semi fitted, Single cuff

- Fly front
- Contrast White rounded collar and contrast White single button cuff



SEMI FITTED  
CONTRAST SINGLE CUFF

**FRANCA Blouse**  
Semi fitted, Single cuff

**Codes & Colours:**  
2251A White with front panel stripe

**Sizes:** 6 - 24 regular



A. White with front panel stripe



**FRANCA Blouse**  
Semi fitted, Single cuff

# COTTON RICH



55% COTTON / 45% POLYESTER - EASY IRON

WOMEN'S **PARMA** Semi fitted, Long sleeve WOMEN'S **MODENA** Semi fitted, Short sleeve

- Fly front
- Button up collar

# NEW FOR 2018!



**PARMA Blouse**  
Semi fitted, Long sleeve

- Codes & Colours:**  
2295A White  
2295E Blue  
2295G Grey  
2295H Navy

**Sizes:** 6 - 24 regular



**PARMA Blouse**  
Semi fitted, Long sleeve

**MODENA Blouse**  
Semi fitted, Short sleeve

- Codes & Colours:**  
2296A White  
2296E Blue  
2296G Grey  
2296H Navy

**Sizes:** 6 - 24 regular



**MODENA Blouse**  
Semi fitted, Short sleeve

# COTTON RICH



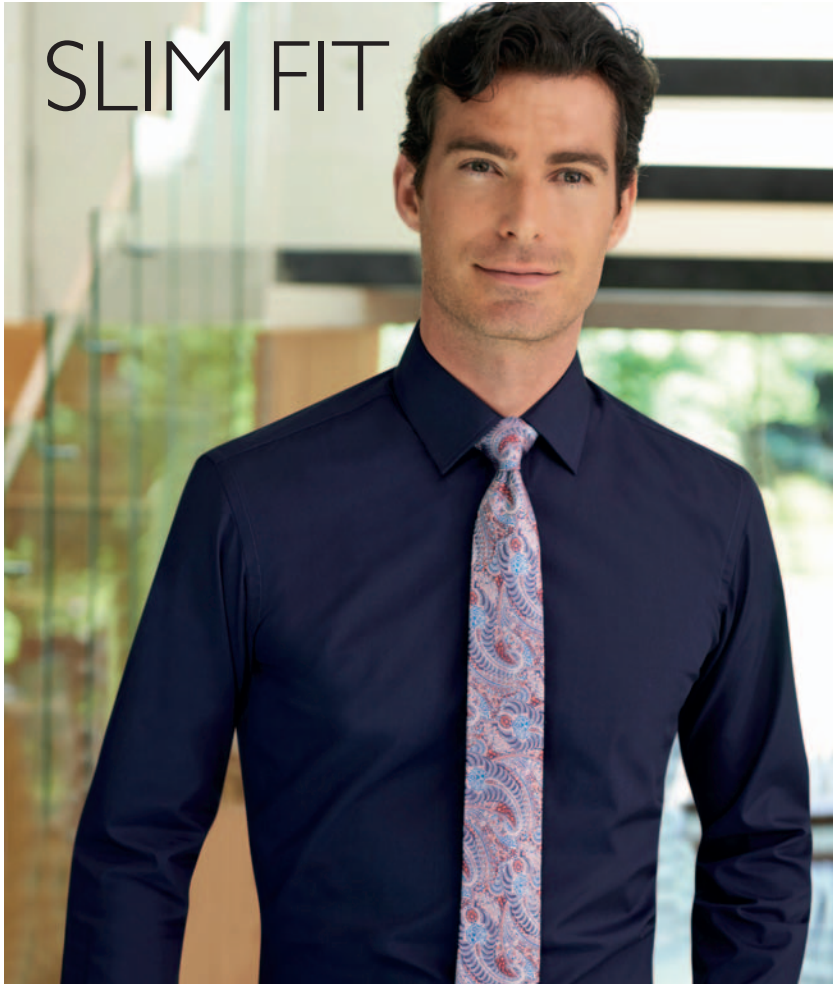
55% COTTON / 45% POLYESTER - EASY IRON - LONG SLEEVE

MEN'S ALBA Slim fit, Long sleeve

- Twin rear darts for defined silhouette
- Semi cutaway collar

# NEW FOR 2018!

## GREY & NAVY COLOURWAYS



# SLIM FIT



ALBA Shirt  
Slim fit, Single cuff

Codes & Colours:

- 7640A White
- 7640D Black
- 7640E Blue
- 7640F Lilac
- 7640G Grey
- 7640H Navy

Sizes: 14" - 18"

A. White



E. Blue

F. Lilac

D. Black

G. Grey

H. Navy



ALBA Shirt  
Slim fit, Single cuff

# COTTON RICH



55% COTTON / 45% POLYESTER - EASY IRON

MEN'S **RAPINO** Classic fit, Long sleeve MEN'S **ROSELLO** Classic fit, Short sleeve

- Chest pocket (Rapino / Rosello)
- Single button cuff (Rapino)



**RAPINO** Shirt  
Classic fit, Single cuff

**Codes & Colours:**

- 7539A White
- 7539D Black
- 7539E Blue
- 7539F Lilac
- 7539G Grey
- 7539H Navy

**Sizes:** 14.5"- 20"



**RAPINO** Shirt  
Classic fit, Single cuff

**ROSELLO** Shirt  
Classic fit, Short sleeve

**Codes & Colours:**

- 7541A White
- 7541D Black
- 7541E Blue
- 7541F Lilac
- 7641G Grey
- 7641H Navy

**Sizes:** 14.5"- 20"



**ROSELLO** Shirt  
Classic fit, Short sleeve

NEW  
FOR  
2018!  
GREY & NAVY  
COLOURWAYS

# COTTON RICH



55% COTTON / 45% POLYESTER - EASY IRON

WOMEN'S **PALENA** Semi fitted, Long sleeve WOMEN'S **PADULI** Semi fitted, Short sleeve

- Single 2 button cuff (Palena)
- Short sleeve with adjustable cuff (Paduli)



**PALENA Blouse**  
Semi fitted, Single cuff

**Codes & Colours:**

- 2214A White
- 2214E Blue
- 2214F Lilac

**Sizes:** 4 - 30 regular



**PALENA Blouse**  
Semi fitted, Single cuff

**Codes & Colours:**

- 2214D Black

**Sizes:** 6 - 24 regular

**PADULI Blouse**  
Semi fitted, Short sleeve

**Codes & Colours:**

- 2216A White
- 2216E Blue
- 2216F Lilac

**Sizes:** 4 - 30 regular



**PADULI Blouse**  
Semi fitted, Short sleeve

**Codes & Colours:**

- 2216D Black

**Sizes:** 6 - 24 regular

# SEMI FITTED



F. Lilac

A. White

E. Blue

D. Black





# MONZA

MEN'S LONG SLEEVE SHIRT  
WOMEN'S LUGANO LONG SLEEVE BLOUSE





# COTTON RICH



60% COTTON / 40% POLYESTER - SLIM FIT - EASY IRON

MEN'S MONZA Slim fit, Long sleeve

- Single two button cuff
- Twin rear darts for refined silhouette



A. Lilac Houndstooth



B. Blue Houndstooth



D. Black Houndstooth

MONZA Shirt  
Slim fit, Long sleeve

Codes & Colours:

- 7755A Lilac Houndstooth
- 7755B Blue Houndstooth
- 7755D Black Houndstooth

Sizes: 14" - 18"



MONZA Shirt  
Slim fit, Single cuff

# COTTON RICH



60% COTTON / 40% POLYESTER - SLIM FIT - EASY IRON

WOMEN'S **LUGANO** Semi fitted, Long sleeve

WOMEN'S **NAPOLI** Semi fitted, Short sleeve

- Fly Front
- Button up collar



A. Lilac Houndstooth



B. Blue Houndstooth



D. Black Houndstooth

**LUGANO Blouse**  
Semi fitted, Long sleeve

**Codes & Colours:**

- 2281A Lilac Houndstooth
- 2281B Blue Houndstooth
- 2281D Black Houndstooth

**Sizes:** 6 - 24 regular



**LUGANO Blouse**  
Semi fitted, Long sleeve

**NAPOLI Blouse**  
Semi fitted, Short sleeve

**Codes & Colours:**

- 2282A Lilac Houndstooth
- 2282B Blue Houndstooth
- 2282D Black Houndstooth

**Sizes:** 6 - 24 regular



**NAPOLI Blouse**  
Semi fitted, Short sleeve



# LUGANO & NAPOLI

LONG & SHORT SLEEVE BLOUSES

# COTTON RICH



**60% COTTON / 40% POLYESTER - EASY IRON**

WOMEN'S **PERANO** Semi fitted, Long sleeve WOMEN'S **PESCARA** Semi fitted, Short sleeve

MEN'S **RUFINA** Classic fit, Long sleeve MEN'S **ROCCELLA** Classic fit, Short sleeve

- Chest pocket (Rufina, Roccella)
- Single 2 button cuff (Perano)
- Short sleeve with adjustable cuff (Pescara)



**PERANO Blouse**  
Semi fitted, Long sleeve

**Codes & Colours:**

- 2215A White/Grey Stripe
- 2215B Pink/Grey Stripe
- 2215C Blue/White Stripe

**Sizes:** 6 - 24 regular

**PESCARA Blouse**  
Semi fitted, Short sleeve

**Codes & Colours:**

- 2217A White/Grey Stripe
- 2217B Pink/Grey Stripe
- 2217C Blue/White Stripe

**Sizes:** 6 - 24 regular

**RUFINA Shirt**  
Classic fit, Long sleeve

**Codes & Colours:**

- 7540A White/Grey Stripe
- 7540C Blue/White Stripe

**Sizes:** 14.5" - 20"

**ROCCELLA Shirt**  
Classic fit, Short sleeve

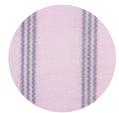
**Codes & Colours:**

- 7542A White/Grey Stripe
- 7542C Blue/White Stripe

**Sizes:** 14.5" - 20"



A. White/Grey Stripe



B. Pink/Grey Stripe



C. Blue/White Stripe



**PERANO Blouse**  
Semi fitted, Long sleeve



**PESCARA Blouse**  
Semi fitted, Short sleeve



**RUFINA Shirt**  
Classic fit, Long sleeve



**ROCCELLA Shirt**  
Classic fit, Short sleeve

# COTTON RICH

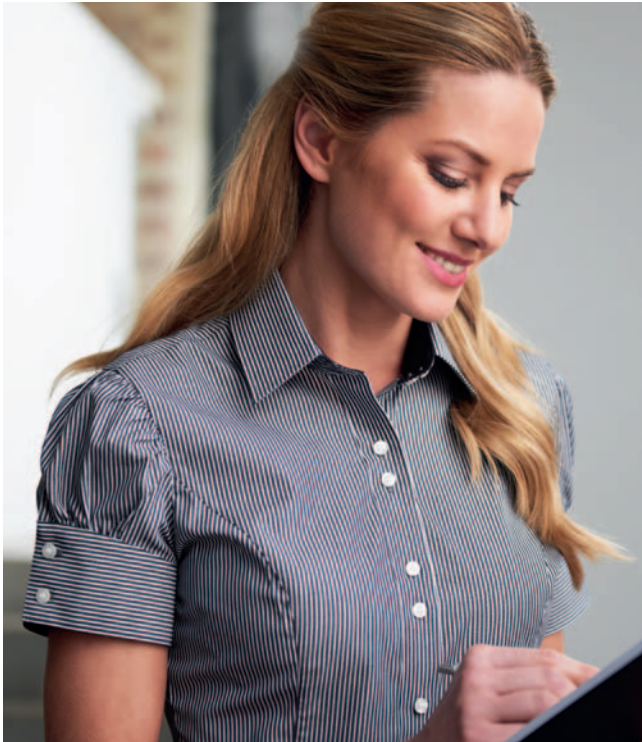


**60% COTTON / 40% POLYESTER - EASY IRON**

WOMEN'S **CAMPANIA** Semi fitted, Long sleeve WOMEN'S **LIGURIA** Semi fitted, Short sleeve

MEN'S **MANTOVA** Classic fit, Long sleeve

- Chest pocket (Mantova)
- Contrast inner collar and cuff (C only)
- Double button fastening (Campania)



**CAMPANIA Blouse**  
Semi fitted, Long sleeve

**Codes & Colours:**

2239A White Waffle Weave

2239C Black/White Stripe

**Sizes:** 6 - 24 regular

**LIGURIA Blouse**  
Semi fitted, Short sleeve

**Codes & Colours:**

2240A White Waffle Weave

2240C Black/White Stripe

**Sizes:** 6 - 24 regular

**MANTOVA Shirt**  
Classic fit, Long sleeve

**Codes & Colours:**

7594A White Waffle Weave

7594C Black/White Stripe

**Sizes:** 14.5" - 20"

**SAVONA Shirt**  
Classic fit, Short sleeve

**Codes & Colours:**

7595C Black/White Stripe

**Sizes:** 14.5" - 20"



A

C



A

C



A. White Waffle Weave



C. Black/White Stripe



**CAMPANIA Blouse**  
Semi fitted, Single cuff



**LIGURIA Blouse**  
Semi fitted, Short sleeve



**MANTOVA Shirt**  
Classic fit, Single cuff



**SAVONA Shirt**  
Classic fit, Short sleeve



# ONE COLLECTION



65% POLYESTER / 35% COTTON

MEN'S JUNO Long sleeve

MEN'S VESTA Short sleeve

- Premium quality 65% polyester / 35% cotton fabric, 115g
- Long sleeve (Juno) / Short sleeve (Vesta)
- Classic fit
- 2 Button cuff (Juno)
- Chest pocket
- Large size range 14.5" - 22"
- Machine washable at 40°

# BUSINESS ESSENTIALS

VALUE RANGE



**JUNO Shirt**  
Long sleeve

**Codes & Colours:**  
7742A White  
7742B Blue

**Sizes:**  
14.5" - 22"



**JUNO Shirt**  
Long sleeve

**VESTA Shirt**  
Short sleeve

**Codes & Colours:**  
7743A White  
7743B Blue

**Sizes:**  
14.5" - 22"



**VESTA Shirt**  
Short sleeve

# ONE COLLECTION



65% POLYESTER / 35% COTTON

WOMEN'S **SELENE** Long sleeve

WOMEN'S **EOS** Short sleeve

- Premium quality 65% polyester / 35% cotton fabric, 115g
- Long sleeve (Selene) / Short sleeve (Eos)
- Classic fit
- 2 Button cuff (Selene)
- Large size range 4R - 30R
- Machine washable at 40°

## BUSINESS ESSENTIALS

VALUE RANGE



**SELENE Blouse**  
Long sleeve

**Codes & Colours:**  
2270A White  
2270B Blue

**Sizes:**  
4R - 30R



**SELENE Blouse**  
Long sleeve

**EOS Blouse**  
Short sleeve

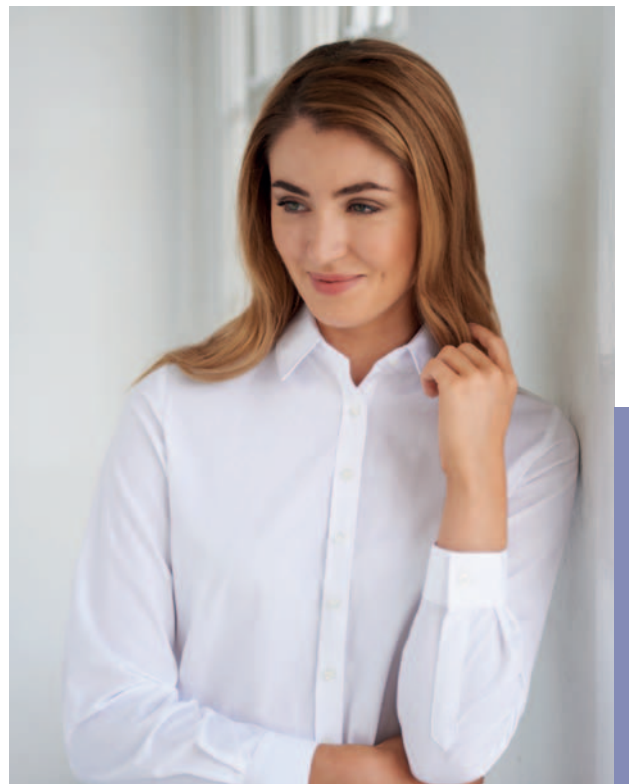
**Codes & Colours:**  
2271A White  
2271B Blue

**Sizes:**  
4R - 30R



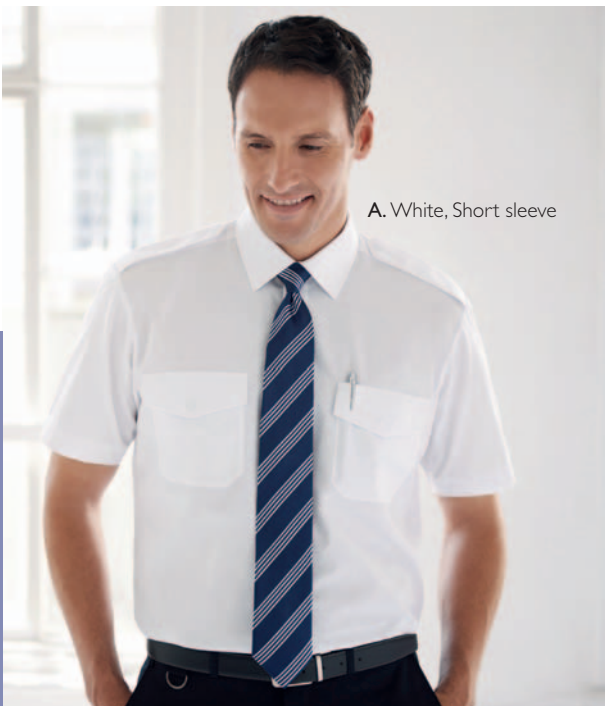
**EOS Blouse**  
Short sleeve



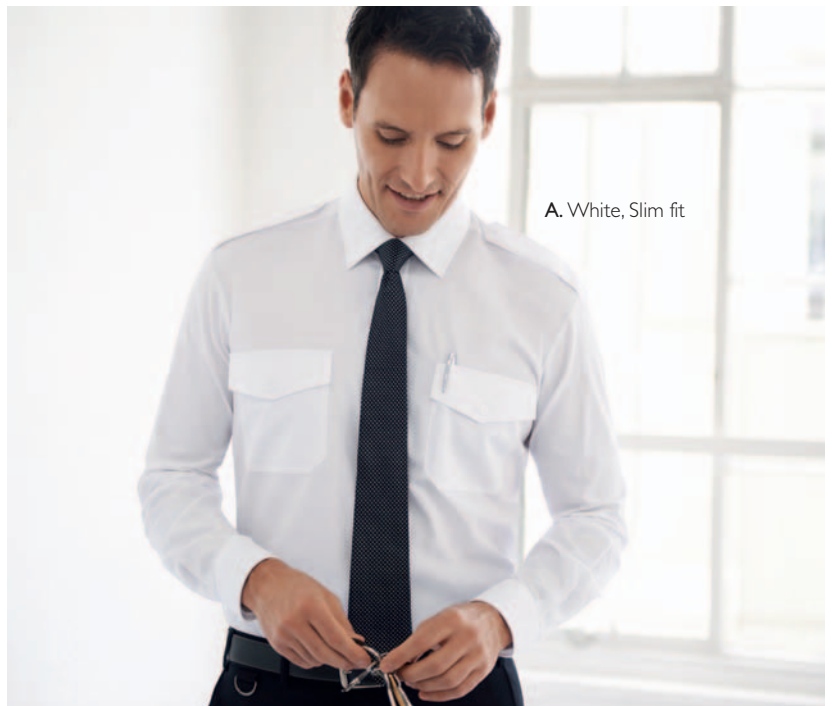




A. White, Classic fit



A. White, Short sleeve



A. White, Slim fit

# ONE COLLECTION



65% POLYESTER / 35% COTTON - PILOT SHIRTS - EASY CARE

**HERMES** Classic fit, Long sleeve pilot shirt

**OLYMPUS** Classic fit, Short sleeve pilot shirt

**ARES** Slim fit, Long sleeve pilot shirt

- Premium quality 65% polyester / 35% cotton fabric, 115g
- Long sleeve (Hermes & Ares) / Short sleeve (Olympus)
- Classic fit (Hermes & Olympus) Slim fit (Ares)
- 2 Button cuff (Hermes & Ares)
- Twin chest pockets with flap
- Pen holder
- Epaulettes
- Classic fit available up to collar size 22"
- Machine washable at 40°

## BUSINESS ESSENTIALS

VALUE RANGE



**HERMES Shirt**  
Classic Fit Pilot Shirt

**Codes & Colours:**  
7745A White

**Sizes:**  
14.5"- 22"

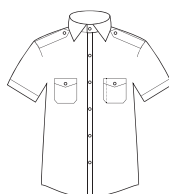


**HERMES Shirt**  
Classic fit, Button cuff

**OLYMPUS Shirt**  
Classic Fit Pilot Shirt

**Codes & Colours:**  
7746A White

**Sizes:**  
14.5"- 22"



**OLYMPUS Shirt**  
Classic fit, Short sleeve

**ARES Shirt**  
Slim Fit Pilot Shirt

**Codes & Colours:**  
7756A White

**Sizes:**  
14"- 18"



**ARES Shirt**  
Slim fit, Button cuff

**CLASSIC FIT**  
AVAILABLE UP TO SIZE 22"

**SLIM FIT**  
AVAILABLE UP TO SIZE 18"

# MIX & MATCH COLLECTION

A wide choice of classic men's blazers, jackets, trousers, coats and a timeless collection of formalwear. Introducing a matching classic women's coat

## WOMEN'S

BURLINGTON Overcoat 141

## MEN'S

BOND Overcoat 141

WHIPCORD Raincoat 141

HENLEY Blazer 142

REIGATE Blazer 142

OXFORD Blazer 142

MIX & MATCH Jacket 142

BRANMARKET Trousers 143

SINGLE BREASTED Black Jacket 143

BLACK Waistcoat 143

STRIPED Trousers 143

TAILCOAT 144

WAISTCOAT 144

LOUNGE Jacket 144

HERRINGBONE Trousers 144

SINGLE BREASTED Dress Jacket 145

TUXEDO 145

DRESS Trousers 145



Matching Bond and Burlington Overcoats



**BURLINGTON**  
Women's Overcoat

Black

Single breasted, 7 button, fly front, centre vent, rear belt detail

60% wool, 20% cashmere, 20% polyamide

**Sizes:**

6 - 24 regular

Centre back length at size 12R = 103cm

**Codes & Colour:**

2261B Navy  
2261C Black



**BOND**  
Men's Overcoat

Black

Single breasted, 3 button, fly front, centre vent, hand edge stitching.

60% wool, 20% cashmere, 20% polyamide

**Sizes:**

36" - 54" regular

Centre back length at size 40R = 108cm

**Codes & Colours:**

9760A Charcoal  
9760B Navy  
9760C Black



**WHIPCORD**  
Men's Raincoat

Black

Single breasted, 3 button fly front, centre vent, raglan sleeve, viscose check lining.

55% Polyester, 45% Wool, Teflon finish

**Sizes:**

36" - 50" regular  
40" - 50" long

Centre back length at size 40R = 102cm

**Codes & Colours:**

4003D Black

# MIX & MATCH COLLECTION



A. Green



## HENLEY Blazer

Green

'Club' blazer; single breasted, 2 button with side vents, patch pockets, hand stitched edges.

Dry clean only.  
55% Polyester; 45% Wool

### Sizes:

38" - 50" short  
36" - 56" regular  
38" - 50" long

### Code & Colour:

5051A Green  
5051B Black  
5051C Navy

## REIGATE Blazer

Navy

Double breasted, button 2 show 6, hand stitched edges.

Dry clean only.  
Pure New Wool

### Sizes:

36" - 46" short  
36" - 54" regular  
36" - 48" long

### Code & Colour:

7046A Navy

## OXFORD Blazer

Navy

Single breasted, 2 button, 2 patch pockets and a breast welt, side vents, hand stitched edges.

Dry clean only.  
Pure New Wool

### Sizes:

36" - 46" short  
36" - 54" regular  
36" - 48" long

### Code & Colour:

7057A Navy

## MIX & MATCH Jacket

Charcoal

Classic single breasted jacket, 2 button, side vents, 4 inside pockets, hand stitched edges.

Dry clean only.  
55% Polyester; 45% Wool

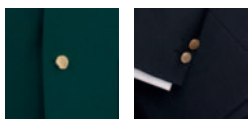
### Sizes:

36" - 48" short  
36" - 50" regular  
(Navy & Black reg to 54")  
36" - 48" long

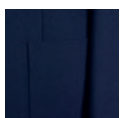
### Code & Colour:

5047A Mid Grey  
5047B Navy  
5047C Charcoal  
5047D Black

Coordinates with Branmarket Trousers



A. Green B. Black



C. Navy



## BRANMARKET Trousers

Mid Grey

Single pleat trousers; easycare,  
1 hip pocket, French bearer; half lined.

55% Polyester; 45% Wool  
420 grams per linear metre  
Machine washable

### Sizes:

28" - 50" waist in leg lengths  
S-29.5",  
R-31.5", L-33"  
& 36" unfinished

### Codes & Colours:

8432A Mid Grey  
8432B Navy  
8432C Charcoal  
8432D Black

Coordinates with Mix & Match Jacket



## SINGLE BREASTED Black Jacket

Classic single breasted jacket,  
2 button, side vents, 4 inside  
pockets, hand stitched edges.

Dry clean only  
55% Polyester; 45% Wool

### Sizes:

36" - 48" short  
36" - 54" regular  
36" - 48" long

### Code & Colour:

5047D Black



## BLACK Waistcoat

Single breasted, 5 button waistcoat  
with 4 pockets to match jacket.

Dry clean only  
55% Polyester; 45% Wool

### Sizes:

36" - 48" short  
36" - 54" regular  
36" - 48" long

### Code & Colour:

1081D Black



## STRIPED Trousers

Superbly tailored in a wool blend  
twill, brace buttons, belt loops,  
half lined.

55% Polyester; 45% Wool  
Machine washable

### Sizes:

28" - 52" waist in leg lengths  
S-29.5", R-31.5", L-33"  
& 36" unfinished

### Code & Colour:

8022C Morning Stripe,  
single pleat trousers

# MIX & MATCH COLLECTION



## TAILCOAT

Single breasted with double breasted lapels, centre vent.

Pure New Wool Herringbone  
Dry clean only

**Sizes:**

38" - 48" short  
34" - 50" regular  
38" - 48" long

**Code & Colour:**

5701A Black



## WAISTCOAT

Single breasted, 5 button,  
2 lower welt pockets,  
satin backed with adjuster.

Pure New Wool Herringbone  
Dry clean only

**Sizes:**

34" - 56" regular  
36" - 54" long

**Code & Colour:**

1701A Black



## LOUNGE Jacket

Single breasted,  
2 buttons, side vents.

Pure New Wool Herringbone  
Dry clean only

**Sizes:**

38" - 48" short  
36" - 50" regular  
38" - 48" long

**Code & Colour:**

5702A Black



## HERRINGBONE Trousers

Single pleat,  
buckle side adjuster.

Pure New Wool Herringbone  
Dry clean only

**Sizes:**

28" - 60" waist  
leg length 37" unfinished

**Code & Colour:**

8702A Black





## SINGLE BREASTED Dress Jacket

1 button fastening with satin faced lapels and pocket flaps, side vents.

55% Polyester; 45% Wool  
Dry clean only

**Sizes:**

36" - 54" short  
36" - 56" regular  
38" - 52" long

**Code & Colour:**  
5977A Black



## TUXEDO

1 button fastening with step collar; plain back, straight side pockets, cloth buttons.

55% Polyester; 45% Wool  
with Teflon stain-resistant finish  
Dry clean only

**Sizes:**

38" - 46" short  
36" - 50" regular  
38" - 46" long

**Code & Colour:**  
5442A White



## DRESS Trousers

Single pleated front, satin stripe, side seam, button side adjuster; half lined.

55% Polyester; 45% Wool  
Machine washable

**Sizes:**

28" - 54" waist in leg lengths  
S-29.5", R-31.5", L-33"  
& 36" unfinished

**Code & Colour:**  
8354A Black

# GARMENT CLEANING & ALLOCATION GUIDELINES

## Garment Cleaning / Year:

365 days per year  
20 days holiday  
8 days bank holiday  
104 weekend days

TOTAL WORKING DAYS = 233

**Advised allocation of 3 bottoms/dresses, 2 Jackets/Waistcoats per full time worker.**

**JACKETS** 233 days - 2 jackets = 116 days wear/year wear for 10 days before washing = maximum 10 washes or 10 dry cleans per year

**WAISTCOATS** 233 days - 2 waistcoats = 116 days wear/year wear for 10 days before washing = maximum 10 washes or 10 dry cleans per year

**Please note our Business Casual Tweed Waistcoats are dry clean only.**

**TROUSERS** 233 days - 3 bottoms = 77 days wear/year wear for 4 days before washing = maximum 20 washes per year

**SKIRTS** 233 days - 3 bottoms = 77 days wear/year wear for 4 days before washing = maximum 20 washes per year

**DRESSES** 233 days - 3 bottoms = 77 days wear/year wear for 4 days before washing = maximum 20 washes per year

**KNITWEAR** 233 days - 3 pieces = 77 days wear/year wear for 4 days before washing = maximum 20 washes per year

This document is intended as a guideline only, and subject to following washing instructions on the label of the garment.

**Ideally, full-time wearers should receive a minimum of:**

- 2 jackets/waistcoats
- 3 trousers/skirts/knitwear
- 5 shirts/blouses

The same garments should not be worn on consecutive days,



## BROOK TAVERNER IN NUMBERS

- | showroom, Keighley West Yorkshire
- 6 miles of garment hanging rails
- 8 sales people covering UK and Europe
- 120 employees
- 850+ packages shipped daily
- 1,800 trousers hemmed per week
- 3,000 calls taken by our telesales per week
- 5,000 tax tabs applied each week
- 16,500 individual SKUs in stock
- 180,000 sq ft office and warehouse complex
- 450,000+ garments in stock
- £7,500,000+ value of stock held in Keighley
- £30,000,000+ turnover





**BROOK TAVERNER**  
corporate tailoring

[www.brooktaverner.com](http://www.brooktaverner.com)